



Quick Start Guide

FriendlyNET GX5-W Smart Switches



GX5-424W

GX5-448W

GX5-2400W



Introduction

Congratulations on your purchase of the FriendlyNET GX5-W Smart Switch. This device integrates 1000Mbps Gigabit Ethernet, 100Mbps Fast Ethernet and 10Mbps Ethernet network capabilities in a highly flexible package.

This GX5-W Smart Switch has the following key features:

- 24 or 48 10/100Mbps auto-negotiation Fast Ethernet RJ45 ports
- 2 10/100/1000Mbps auto-negotiation Gigabit RJ45 ports (All models except GX5-2400W)
- 2 SFP miniGBIC ports (All models except GX5-2400W)
- All RJ45 ports support auto MDI/MDIX, so cross-over cables or up-link ports are not needed
- Full-/half-duplex transfer mode for 10/100Mbps RJ45 port
- Full-duplex transfer mode for Gigabit port
- Wire-speed reception and transmission
- Store-and-forward switching scheme capability to support rate adaptation and ensure data integrity
- Supports port-setting for Speed/Disable, Flow control
- Easy configuration via Web browser

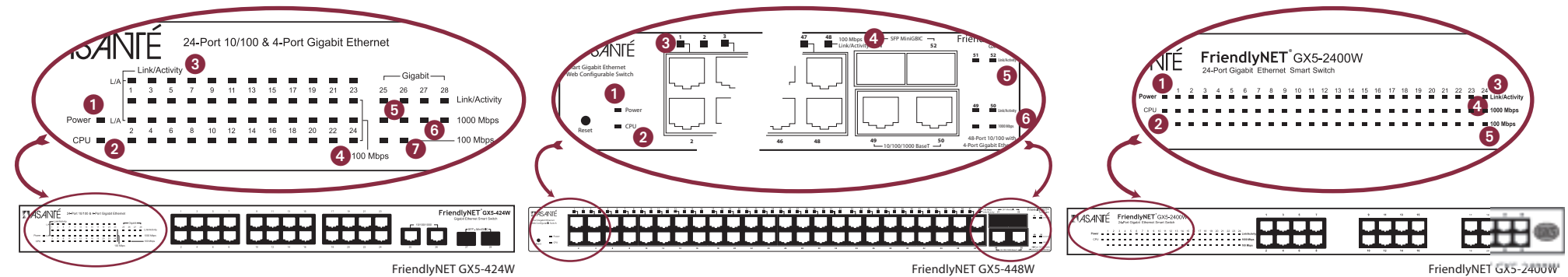
Packing List

Your package contains the following items:

- (1) FriendlyNET GX5-W Smart Switch GX5-424W, or GX5-448W, or GX5-2400W
- (1) Quick Start Guide (this document)
- (1) AC power cord, suitable for your area's electrical power connections
- (4) Rubber feet to be used for shock cushioning
- (2) Rackmounting brackets and screws
- CD-ROM with GX5-W Management Utility and User's Manual

Diagnostic LEDs

Monitor the status of your network with these LED indicators:



- 1. Power:** On when the switch is receiving power.
- 2. CPU:** Blinking when the processor is actively working. Off when system is idle. NOTE: LED on but not flashing means power off/on; switch must be reset.
- 3. Link/Activity:** On when the port is successfully connected to an Ethernet network. Blinking when the port is transmitting or receiving data.
- 4. 100 Mbps:** On when the respective port is connected to a 100Mbps Fast Ethernet network.
- 5. Link/Activity (Ports 25-28):** On when the port is successfully connected to an Ethernet network. Blinking when the port is transmitting or receiving data.
- 6. 1000 Mbps (Ports 25-28):** On when the respective port is connected to a 1000Mbps Gigabit Ethernet network.
- 7. 100 Mbps (Ports 25-26):** On when the respective port is connected to a 100Mbps Fast Ethernet network.

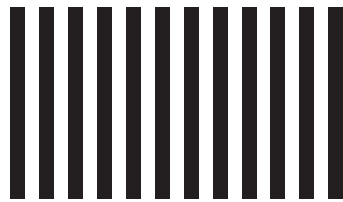
- 1. Power:** On when the switch is receiving power.
- 2. CPU:** Blinking when the processor is actively working. Off when system is idle. NOTE: LED on but not flashing means power off/on; switch must be reset.
- 3. Link/Activity:** On when the port is successfully connected to an Ethernet network. Blinking when the port is transmitting or receiving data.
- 4. 100 Mbps:** On when the respective port is connected to a 100Mbps Fast Ethernet network.
- 5. Link/Activity (Ports 49-52):** On when the port is successfully connected to an Ethernet network. Blinking when the port is transmitting or receiving data.
- 6. 1000 Mbps (Ports 49-52):** On when the respective port is connected to a 1000Mbps Gigabit Ethernet network.

- 1. Power:** On when the switch is receiving power.
- 2. CPU:** Blinking when the processor is actively working. Off when system is idle. NOTE: LED on but not flashing means power off/on; switch must be reset.
- 3. Link/Activity:** On when the port is successfully connected to an Ethernet or Fast Ethernet network. Blinking when the port is transmitting or receiving data.
- 4. 1000 Mbps:** On when the port is connected to a 1000Mbps Gigabit Ethernet network.
- 5. 100 Mbps:** On when the respective port is connected to a 100Mbps Fast Ethernet network.



REGISTRATION CARDS
ASANTE TECHNOLOGIES INC
821 FOX LANE
SAN JOSE CA 95131-9882

BUSINESS REPLY MAIL
FIRST CLASS MAIL PERMIT NO. 4195 SAN JOSE CA
POSTAGE WILL BE PAID BY ADDRESSEE



NO POSTAGE
NECESSARY
IF MAILED
IN THE
UNITED STATES



Asanté Product Registration Card

Name _____

Title _____

Company _____

Address 1 _____

Address 2 _____

City _____

State _____

Zip/Postal _____

Country _____

Phone _____

Fax _____

Email _____

Date of Purchase _____

Asanté Part Number _____

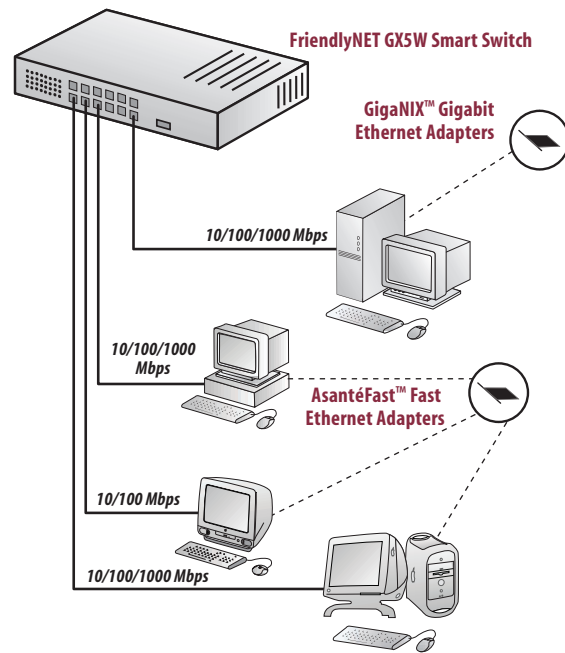
Product Serial Number _____

To register your Asanté product online, please visit:

<http://www.asante.com/support/registration.html>

Connecting to Network Devices

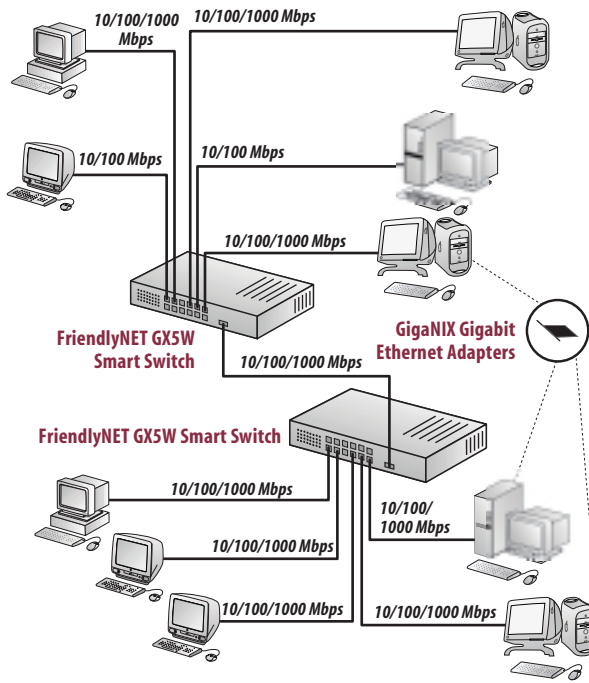
If you are connecting several workstations and a server, you can build the network using the GX5W switch as shown below.



A Simple Network Topology

Connecting to an Existing Switch or Hub

When making switch-to-switch connections, connect any port of the GX5W Smart Switch with a Gigabit cable to a Gigabit port on the other switch.



Multiple Switch Network

Note: For 1000BaseT, 100BaseTX, and 10BaseT networks, the maximum cable length is 100 meters.

Product Specifications

Standards Supported:

IEEE 802.3 10BaseT Ethernet; IEEE 802.3u 100BaseTX Fast Ethernet; IEEE 802.3ab 1000BaseT Gigabit Ethernet; IEEE 802.3x Full-duplex Flow Control

Protocol:

CSMA/CD

Transfer Rate:

Ethernet: 10Mbps (half duplex), 20Mbps (full-duplex)
Fast Ethernet: 100Mbps (half duplex), 200Mbps (full-duplex)
Gigabit Ethernet: 2000Mbps (full-duplex)

Topology:

Star

Network Cables:

10BaseT: 2-pair UTP Cat. 3, 4, 5; up to 100m
100BaseTX: 2-pair UTP Cat. 5; up to 100m
1000BaseT: 4-pair UTP Cat. 5; up to 100m
Fiber module: SFP miniGBIC fiber module (All except GX5-2400W)

Ports:

(24 or 48) 10/100Mbps Auto-MDIX RJ45 ports
(24) 10/100/1000Mbps Auto-MDIX RJ45 ports (GX5-2400W only)
(2) 10/100/1000Mbps Auto-MDIX RJ45 ports (All except GX5-2400W)
(2) SFP miniGBIC fiber slots (All except GX5-2400W)

Transmit Method:

Store and forward

Filtering

Address Table:

GX5-424W:	4K entries per device
GX5-448W:	4K entries per device
GX5-2400W:	8K entries per device

Packet Filtering/Forwarding Rate:

10Mbps Ethernet:	14,880/pps
100Mbps Fast Ethernet:	148,800/pps
1000Mbps Gigabit Ethernet:	1,488,000/pps

MAC Address:

Automatic learning and aging

RAM Buffer:

GX5-424W:	768K bytes per device
GX5-448W:	1536K bytes per device
GX5-2400W:	400K bytes per device

System Requirements

Compatible with Apple Mac OS, Linux, Microsoft Windows 95/98/Me/XP and Windows NT/2000 Professional/Server. Requires a 10/100 Mbps Fast Ethernet or 10/100/1000 Gigabit Ethernet port for each workstation, server or printer.

Warranty

90 days of free telephone support, 24-hour support via web and FTP, with two-year product warranty.

Need More Help?

Consult the Asanté website (www.asante.com) for additional troubleshooting tips and frequently asked questions (FAQs). You may also contact Asanté Technical Support during standard business hours.

Email: support@asante.com

Phone: 801-566-8991

Fax: 801-566-3787

Visit Asanté online at www.asante.com

Main Corporate Telephone Number

408-435-8388

Technical Support

801-566-8991 (Worldwide)

Technical Support Fax

801-566-3787

FCC Compliance Statement

This equipment has been tested and found to comply with the specifications for a Class A digital device, pursuant to Part 15 of the FCC Rules. Operation is subject to the following two conditions:

1. This device may not cause harmful interference, and
2. This device must accept any interference received, including interference that may cause undesired operation.

These limits are designed to provide reasonable protection against harmful interference in a residential installation. This equipment generates, uses, and can radiate radio frequency energy and, if not installed and used according to the instructions, may cause harmful interference to radio communications. However, there is no guarantee that interference will not occur in a particular installation. If this equipment does cause harmful interference to radio or television reception, which is found by turning the equipment off and on, the user is encouraged to try to correct the interference by one or more of the following measures:

- Reorient or relocate the receiving antenna
- Increase the separation between the equipment or devices
- Connect the equipment to an outlet other than the receiver's
- Consult a dealer or an experienced radio/TV technician for assistance

FCC Caution: Any change or modification to the product not expressly approved by Asanté could void the user's authority to operate the device.

CE Mark Warning

This is a Class A product. In a domestic environment, this product may cause radio interference, in which case the user may be required to take adequate measures.

Copyright © 2004 Asanté Technologies, Inc. Asanté and FriendlyNET are registered trademarks of Asanté Technologies, Inc. AsantéFast, the Asanté logo, and GigaNIX are trademarks of Asanté Technologies, Inc. All other brand names and products are trademarks or registered trademarks of their respective holders. All features and specifications are subject to change without prior notice. 06-00693-00 Rev. C (08/04)