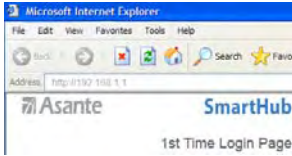


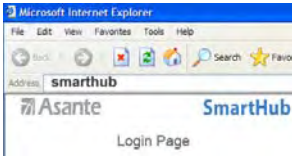
SmartHub

I am a “Smart & Real Simple” wireless router.

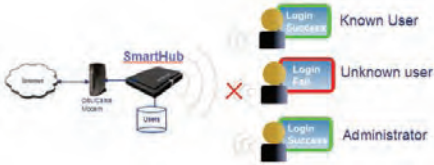
If you are new to me, simply bring up a browser and I will be with you.



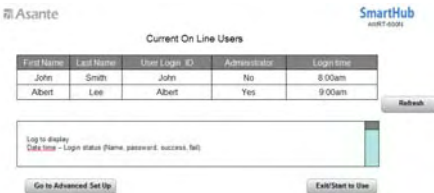
If you need me anytime, simply bring up a browser and enter “smarthub” and I will be with you..



I will serve the users with correct username and password. Therefore, you (administrator) need to introduce your users to me during the setup. After setup, each user would have their own username/password to access Internet.



You are welcome to check who is using me . Of course, you can manage users anytime and anyplace.



I was designed to be smart and friendly to you so that you do

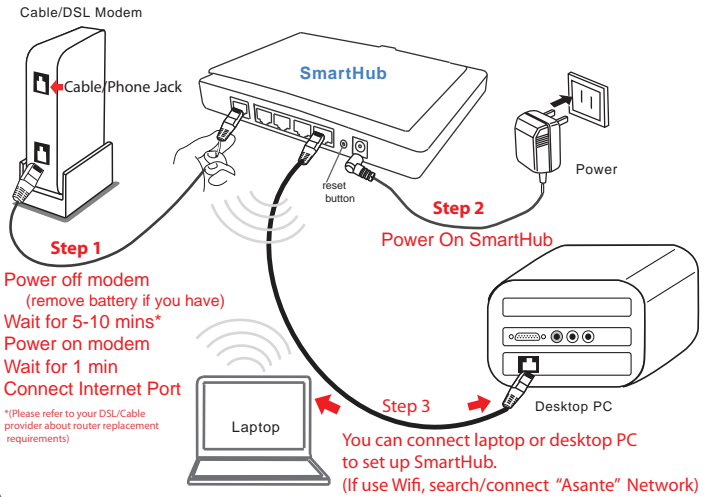
- ✗ not need CDROM setup
- ✗ not need 3-6 pages of quick guide
- ✗ not need to know IP technologies
- ✗ not need to worry how to get me



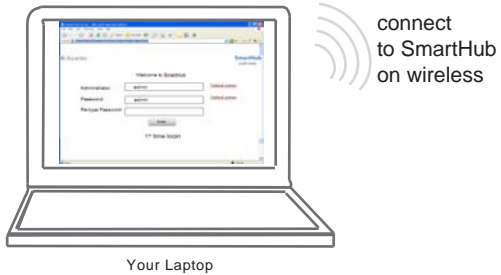
You just need to remember my name - **SmartHub**

Quick Installation

1 Connect the products, your PC or Laptop, Cable/DSL modem to SmartHub as below:



2 Start a browser from the connected computer and Ready to Go



Bring up any browser, SmartHub will show the 1st time login page and guide you step by step. You are required to change password as an administrator. Changing username is an option. You may enter "smarthub" at address bar if you need me anytime.

1. If you did not see any login page, please redo STEP 1.
2. Please check your computer network setting is set to "obtain IP address automatically" and "obtain DNS address automatically" and retry again.
3. Please bring up browser and enter "smarthub".
4. If you still face problem to set it up, please contact us below.

support@asante.com

http://www.asante.com/smarthub/online_support

1-408-435-8388