

How to access the Voyager Megapixel camera

A quick guide

Date: 6/30/2010

1. Overview

This quick guide has instructions on how to access Voyager using various browsers. It also has information on how to setup a router for a host located on the WAN side of the router to access a Voyager located on the local side of the router. Please use the picture below for reference.

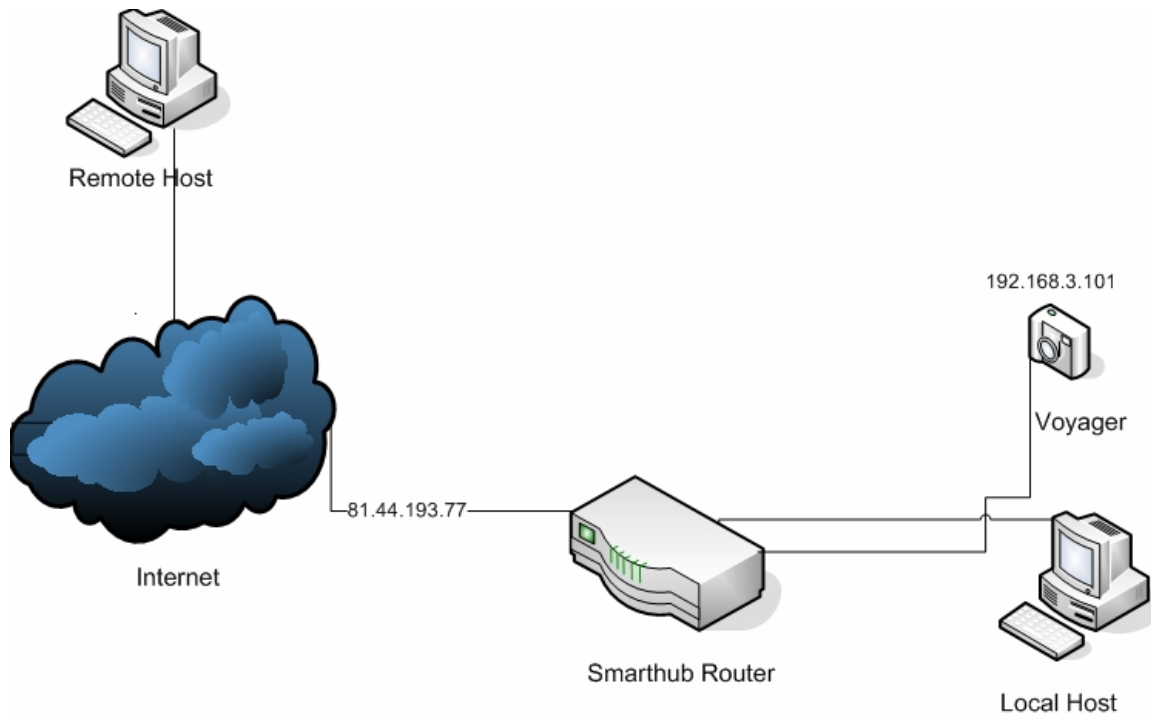


Fig. 1

2. Accessing Voyager using various browses

In order to access Voyager, one needs to find out the IP address of the target Voyager. The IP address of Voyager can be statically assigned or acquired via DHCP. One can use 'IP_finder' utility (can be downloaded from the Asante WEB site) on a Windows based system to identify the IP address. If the target Voyager is on the local network of a router and the accessing host is on the WAN side of the router, the IP address should be the IP address of the WAN interface of the router. Extra setup on the router is also needed (see section 3).

The IP Finder utility shows the IP address and MAC address of the Voyager in the red blocks in the picture below.

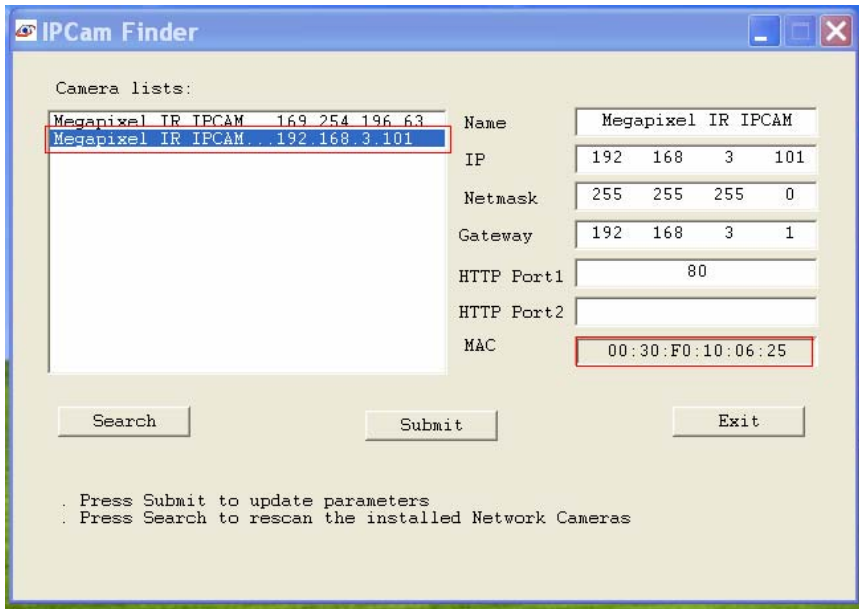


Fig. 2

One of the underlying settings used by the Voyager is the port number. The default port number is '80'. This port number is used by the HTTP protocol employed by browsers. If necessary, this parameter can be changed for the Voyager on the 'Streaming Setting' page depicted in the picture below.

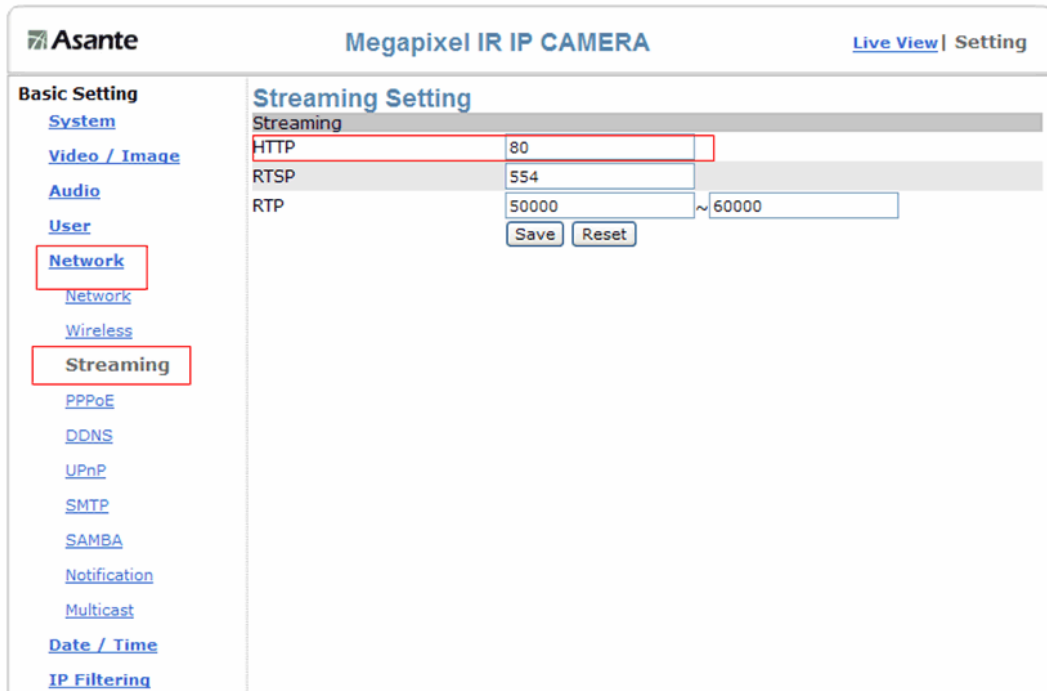


Fig. 3

2.1 Microsoft Internet Explorer

Follow the steps below to access Voyager using Microsoft IE :

- (1) Launch browser Internet Explorer.
- (2) On the address line, type <http://aaa.bbb.ccc.ddd:pppp> and press 'enter'. Here 'aaa.bbb.ccc.ddd' is the IP address of the Voyager and 'pppp' is the optional HTTP port number used to communicate with the Voyager. If 'pppp' is the default value '80' (see Fig. 3), then the portion of the URL ':pppp' is not required.
- (3) The Voyager login pop-up menu will appear and one can login to start to use the Voyager.



Fig. 4

2.2 Mozilla Firefox

Follow the steps below to access Voyager using Firefox:

- (1) Launch browser Firefox.
- (2) On the address line, type <http://aaa.bbb.ccc.ddd:pppp> and press 'enter'. Here 'aaa.bbb.ccc.ddd' is the IP address of the Voyager and 'pppp' is the optional HTTP port number used to communicate with the Voyager. If 'pppp' is the default value '80' (see Fig. 3), then the portion of the URL ':pppp' is not required.
- (3) The Voyager login pop-up menu will appear.

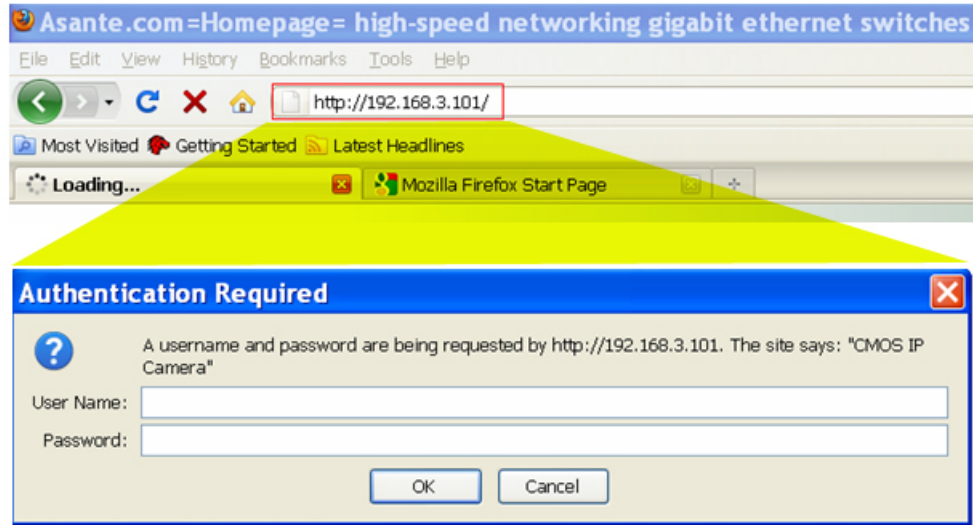


Fig. 5

(4) After username/password is entered, the QuickTime Internet Authentication appears. Enter the same username/password to start to use the Voyager.

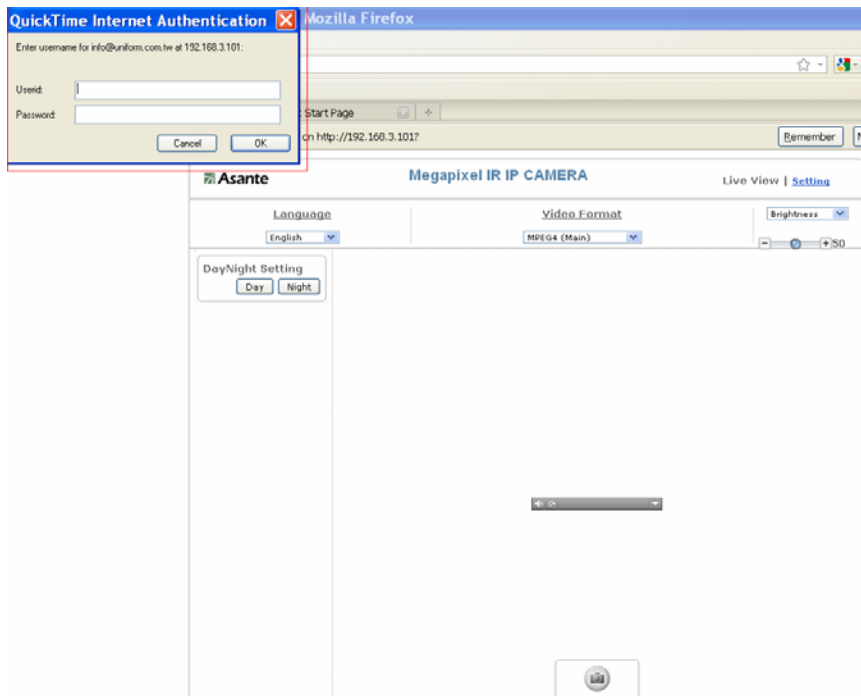


Fig. 6

2.3 Apple Safari

2.3.1 Desktop or Notebook

Follow the steps below to access Voyager using Safari on a Desktop or Notebook:

- (1) Launch browser Safari.
- (2) On the address line, type <http://aaa.bbb.ccc.ddd:pppp> and press 'enter'. Here 'aaa.bbb.ccc.ddd' is the IP address of the Voyager and 'pppp' is the optional HTTP port number used to communicate with the Voyager. If 'pppp' is the default value '80' (see Fig. 3), then the portion of the URL ':pppp' is not required.
- (3) The Voyager login pop-up menu will appear.

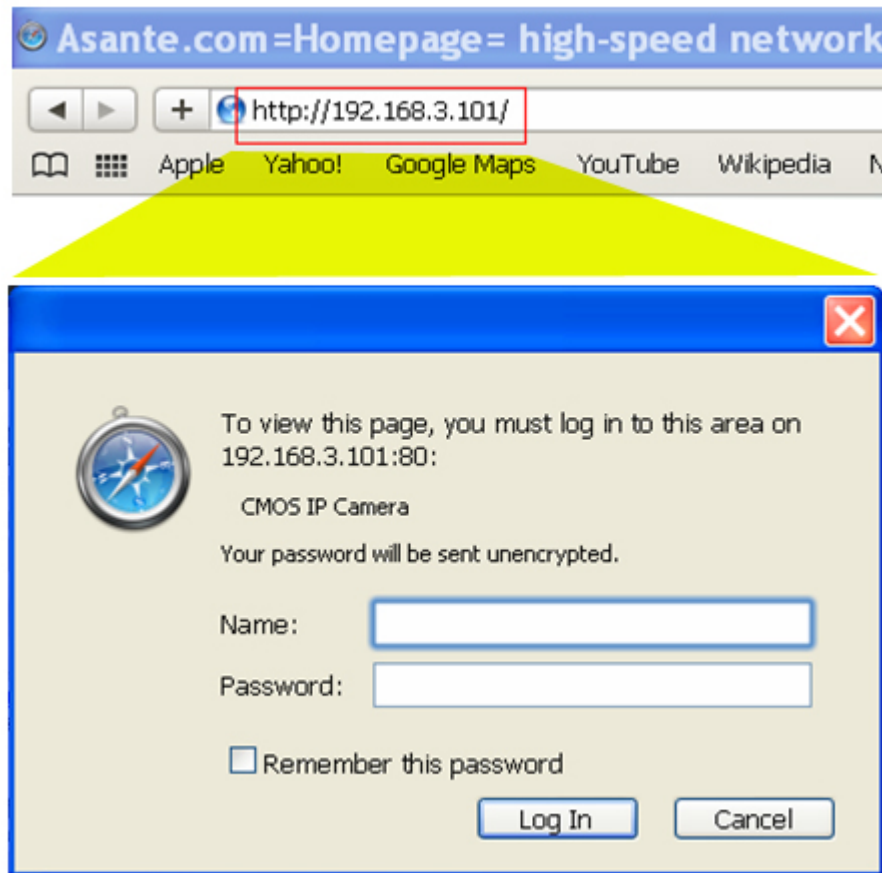


Fig. 7

- (4) After username/password is entered, the QuickTime Internet Authentication appears. Enter the same username/password to start to use the Voyager.

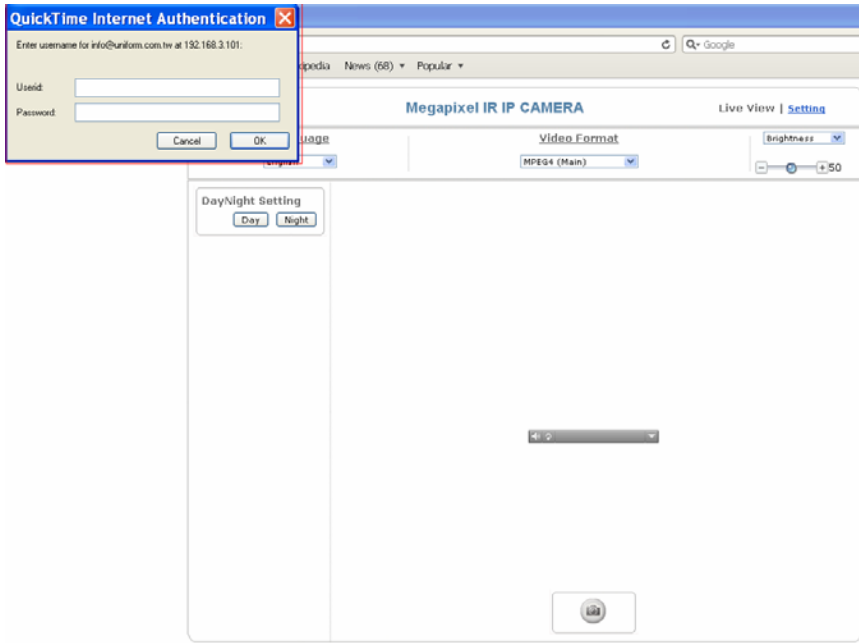
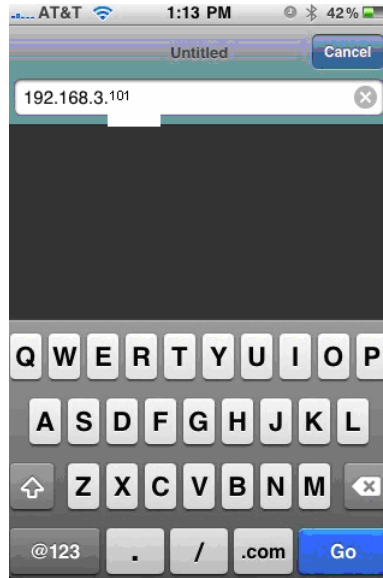


Fig. 8

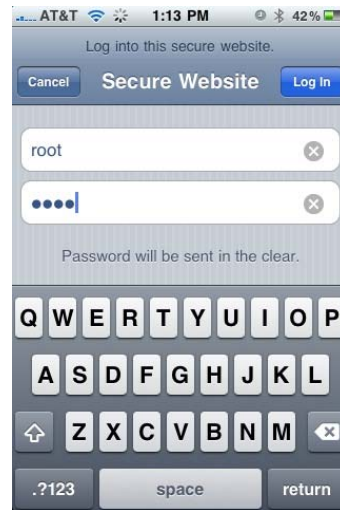
2.3.2 Mobile Device like iPhone

Follow the steps below to access Voyager on iPhone:

- (1) Launch browser Safari.
- (2) On the address line, type <http://aaa.bbb.ccc.ddd:pppp> and press 'enter'. Here 'aaa.bbb.ccc.ddd' is the IP address of the Voyager and 'pppp' is the optional HTTP port number used to communicate with the Voyager. If 'pppp' is the default value '80' (see Fig. 3), then the portion of the URL ':pppp' is not required.



- (3) The Voyager login pop-up menu will appear and one can login to start to use the Voyager.



2.4 Google Chrome

Follow the steps below to access Voyager using Chrome:

- (1) Launch browser Chrome.
- (2) On the address line, type <http://aaa.bbb.ccc.ddd:pppp> and press 'enter'. Here 'aaa.bbb.ccc.ddd' is the IP address of the Voyager and 'pppp' is the optional HTTP port number used to communicate with the Voyager. If 'pppp' is the

default value '80' (see Fig. 3), then the portion of the URL ':pppp' is not required. The Voyager login pop-up menu will appear.

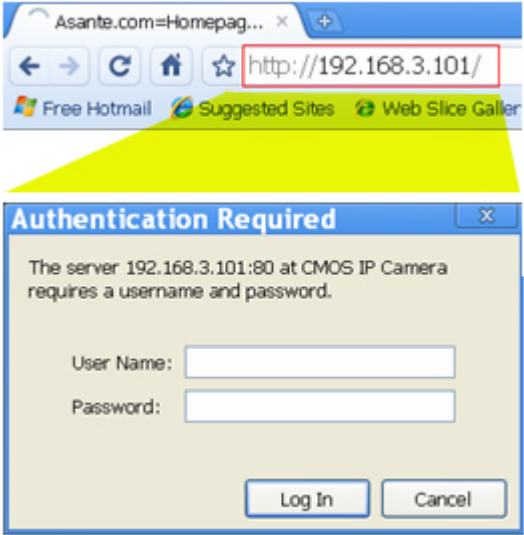


Fig. 9

(3) After username/password is entered, the QuickTime Internet Authentication appears. Enter the SAME username/password to start using the Voyager.

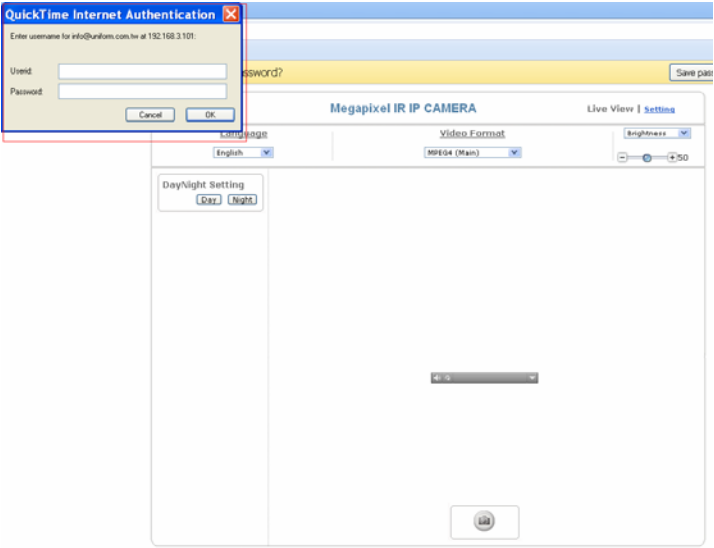


Fig. 10

3. Access Voyager remotely

Voyager is often deployed at home or in an office on a local network behind a router. If one wants to access it from the internet, some special configuration is required on the router to open a path from the accessing device on the internet to the Voyager behind the router. A step by step setup is given below using an Asante Smarthub router. Please skip to step (4) if the router used is not Asante's Smarthub. Please refer to Fig. 1.

- (1) Login the router as the administrator and go to 'Easy Setup' and press 'Add New User' to add a non-computer user.

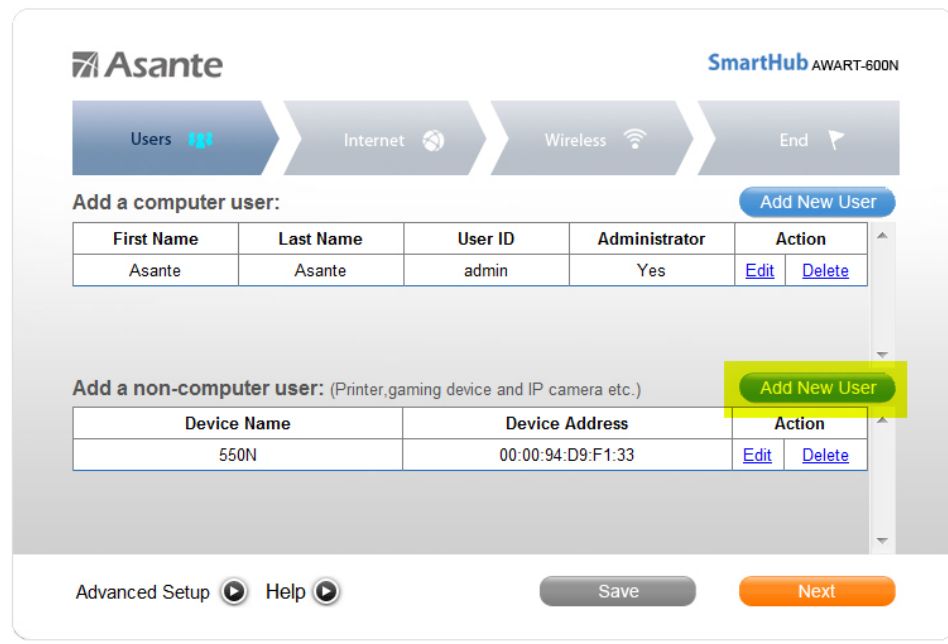
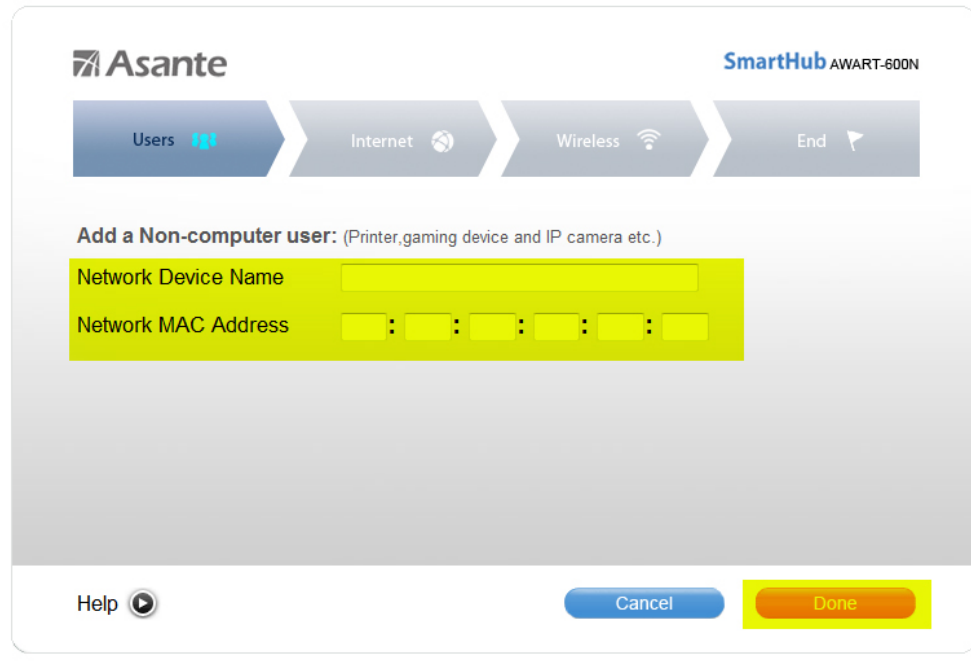


Fig. 11

(2) Enter device name and MAC address followed by pressing the 'done' button.



The screenshot shows the Asante SmartHub AWART-600N web interface. At the top, there is a navigation bar with the Asante logo on the left and 'SmartHub AWART-600N' on the right. Below the logo is a progress indicator with four steps: 'Users' (highlighted in blue), 'Internet', 'Wireless', and 'End'. The main content area is titled 'Add a Non-computer user: (Printer, gaming device and IP camera etc.)'. It contains two input fields: 'Network Device Name' and 'Network MAC Address'. The 'Network Device Name' field is a single-line text input. The 'Network MAC Address' field is a multi-line input with six boxes separated by colons. At the bottom of the form, there are three buttons: 'Help' (with a play icon), 'Cancel' (blue), and 'Done' (yellow).

Fig. 12

(3) Press 'Save' to save the data just entered then press 'Go to Advanced Setup' button to go to 'Advanced Setup' page.



Fig. 13

- (4) On 'Advanced Setup' page, press 'Application'(Fig. 14) to go to 'Application' page(Fig.15).
 If the router is not the Asante's Smarthub, look for the 'Port Forwarding' or 'Port Mapping' page in the router's Web management user interface.

EZ Set Up | Basic Setup | DDNS | MAC Address Clone | Advanced Routing

Internet Setup

Internet Connection Type: Static IP

Internet IP Address: 81 . 44 . 193 . 77

Subnet Mask: 255 . 255 . 255 . 192

Default Gateway: 81 . 44 . 193 . 65

DNS 1: 11 . 22 . 33 . 44

DNS 2(Options): 11 . 22 . 44 . 55

DNS 3(Options): 0 . 0 . 0 . 0

Optional Settings (required by some Internet Service Providers)

Host Name: Asante

Domain Name: Asante

MTU: Auto Size: 1500

Network Setup

Router IP: 192 . 168 . 3 . 1

Subnet Mask: 255.255.255.0

Help Explain

Fig. 14

EZ Set Up | Single Port Forwarding | Port Range Forwarding | DMZ | QoS

Single Port Forwarding

| External Port | Internal Port | Protocol | To IP address | Enabled |
|---------------|---------------|----------|-------------------|--------------------------|
| --- | --- | --- | 192 . 168 . 3 . 0 | <input type="checkbox"/> |
| --- | --- | --- | 192 . 168 . 3 . 0 | <input type="checkbox"/> |
| --- | --- | --- | 192 . 168 . 3 . 0 | <input type="checkbox"/> |
| --- | --- | --- | 192 . 168 . 3 . 0 | <input type="checkbox"/> |
| 0 | 0 | Both | 192 . 168 . 3 . 0 | <input type="checkbox"/> |
| 0 | 0 | Both | 192 . 168 . 3 . 0 | <input type="checkbox"/> |
| 0 | 0 | Both | 192 . 168 . 3 . 0 | <input type="checkbox"/> |
| 0 | 0 | Both | 192 . 168 . 3 . 0 | <input type="checkbox"/> |
| 0 | 0 | Both | 192 . 168 . 3 . 0 | <input type="checkbox"/> |
| 0 | 0 | Both | 192 . 168 . 3 . 0 | <input type="checkbox"/> |
| 0 | 0 | Both | 192 . 168 . 3 . 0 | <input type="checkbox"/> |
| 0 | 0 | Both | 192 . 168 . 3 . 0 | <input type="checkbox"/> |
| 0 | 0 | Both | 192 . 168 . 3 . 0 | <input type="checkbox"/> |
| 0 | 0 | Both | 192 . 168 . 3 . 0 | <input type="checkbox"/> |
| 0 | 0 | Both | 192 . 168 . 3 . 0 | <input type="checkbox"/> |
| 0 | 0 | Both | 192 . 168 . 3 . 0 | <input type="checkbox"/> |

Help Explain

Fig. 15

(5) Setup Single Port Forwarding

In this example, the IP address of Voyager is '192.168.3.101'. By default, port '80' is used for HTTP access and port 554 for QuickTime Client (see Fig. 16). QuickTime is used for video streaming in Browsers other than Microsoft Internet Explorer such as Firefox, Safari and Chrome.

As described in sections above, when these browsers are used, a second authentication for QuickTime is required. The username/password is the same as the one used to login to the Voyager.

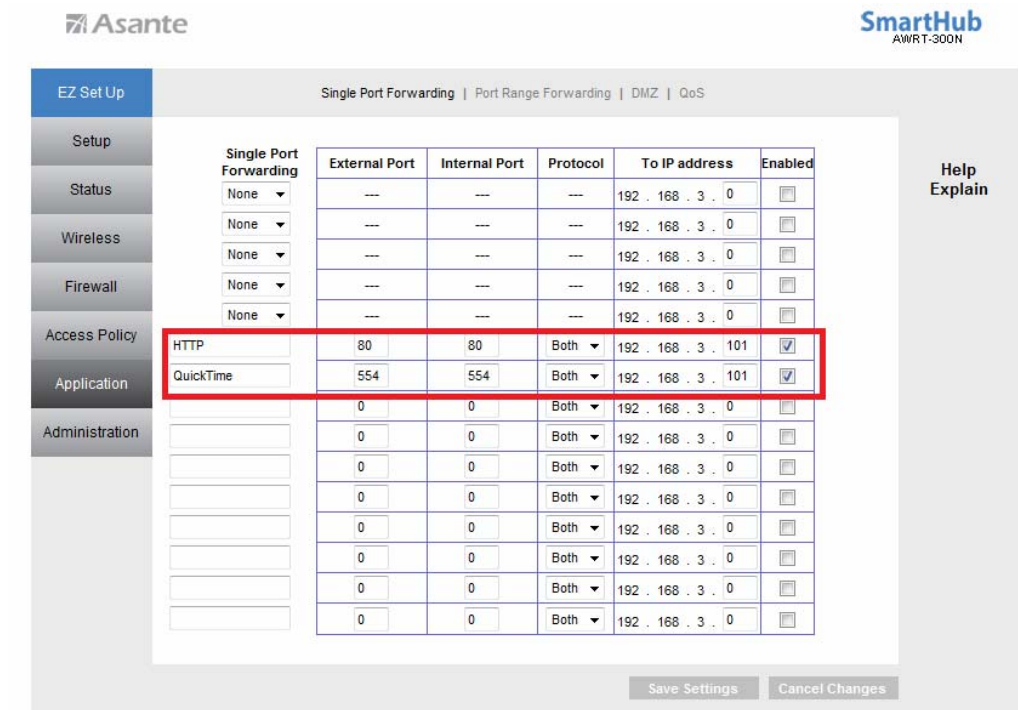


Fig. 16

(6) Access Voyager from internet

In this section please use Fig. 1 as the reference. If the Remote Host in Fig. 1 wants to access the Voyager with IP address '192.168.3.101', steps below must be followed:

- (1) Launch the browser.
- (2) Stop the browser and enter 'http://81.44.193.77:PPPP' in the URL line at the top of the browser page. Here 'PPPP' is the HTTP port number used to access the Voyager (see Fig. 16). ':pppp' will not be required if pppp = 80. In that case, just enter 'http://81.44.193.77'.

- (3) The username/password window (Fig. 17) will appear and the Voyager can be accessed as described in section 2. In Fig. 17, the arrows point to the places where '81.44.193.77' should appear.

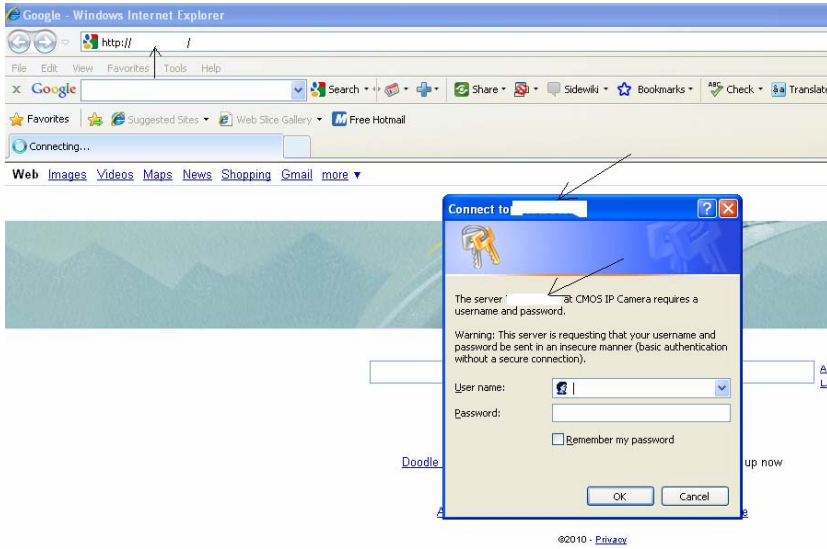


Fig. 17