

## **Network Adapter Configuration Guide for Macintosh® OS X**

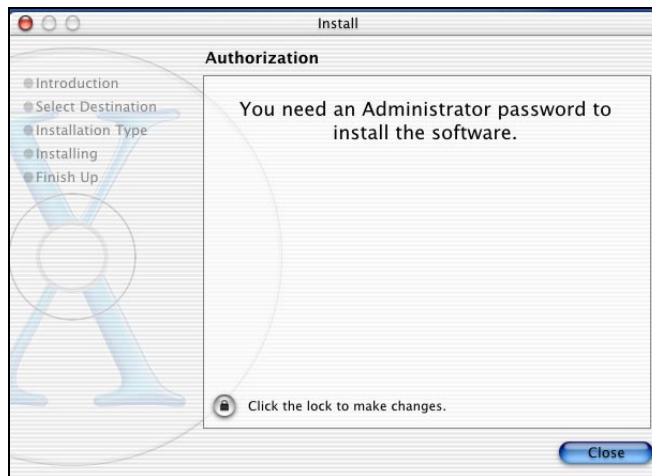
## Hardware and Driver Installation

With the Mac OS X correctly installed on your computer, installing an Asanté network adapter is easy. Simply follow the steps below to install your network adapter card.

1. With the computer turned off, insert the network adapter card into the PCI slot. Make sure that it is firmly seated in the slot.
2. Connect a Category 5 or better network cable from the hub, switch or router to the RJ45 port of the adapter. For further information, see the installation guide that came with your adapter.
3. Turn on the power to your computer and allow it to boot to the desktop.
4. Insert the driver CD. Locate the OSX folder found in the Power Macintosh folder and copy the appropriate driver to your desktop.



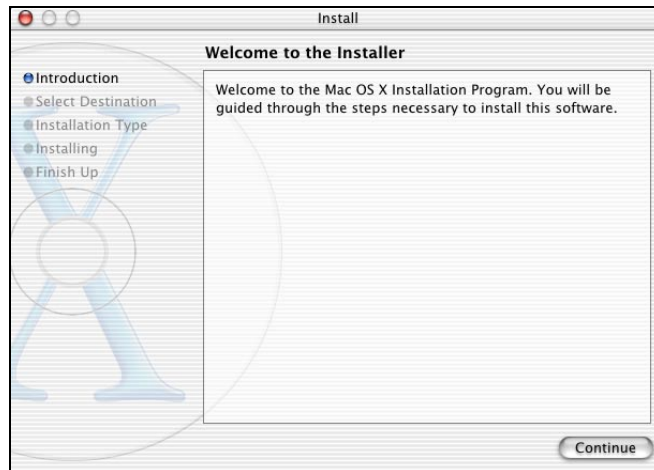
5. Launch the OS X package by double-clicking on the file. You will see the Authorization screen. Click the lock at the bottom of the screen.



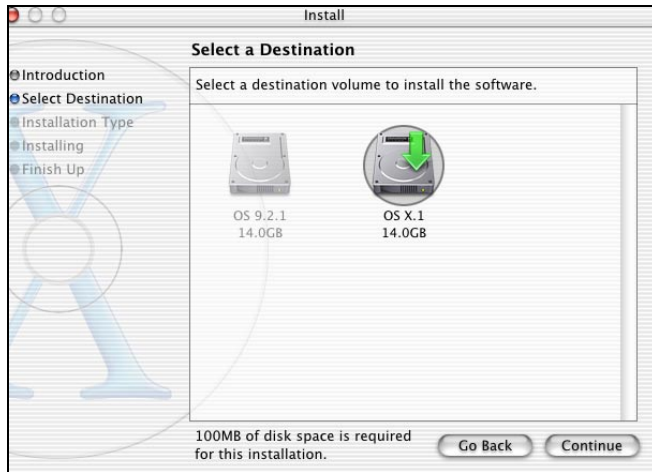
A window will appear asking for an administrator password. This is required by Mac OS X in order to perform any system changes.



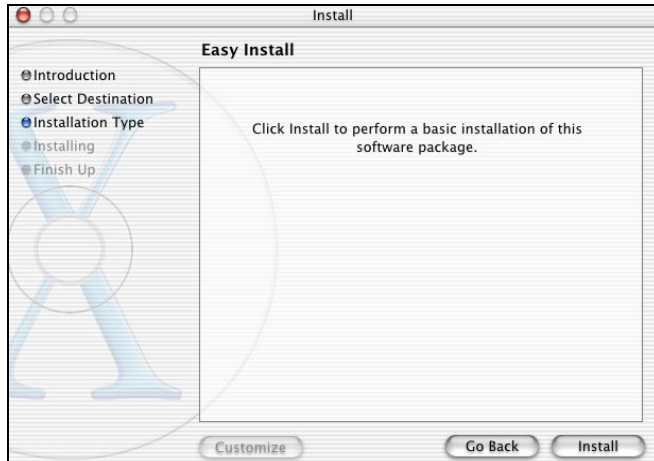
6. Enter the administrator password, and then click **OK**. The administrator password is the password that you created when you installed OSX. If you do not know the administrator password, you will need to contact your MIS department for assistance.



7. You will see a *Welcome* screen. Click the **Continue** button to proceed with the installation.



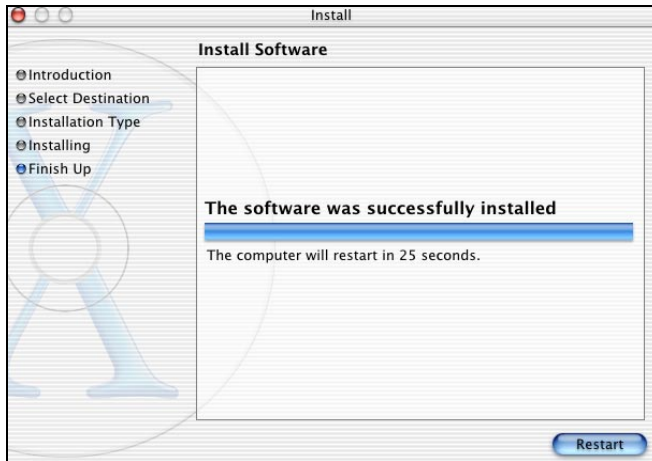
8. This brings you to the *Select a Destination* screen. Click the OS X drive icon, and a green arrow will appear showing the drive has been selected. Click the **Continue** button.



You may see a window warning you to restart your computer after the installation is complete. Click **Continue Installation**.



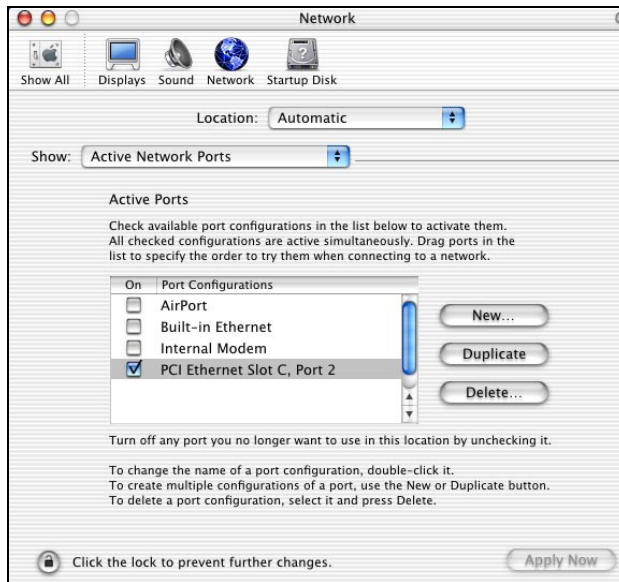
9. When the installation is complete, click the **Close** button and restart your computer.



## Configuring Network Settings

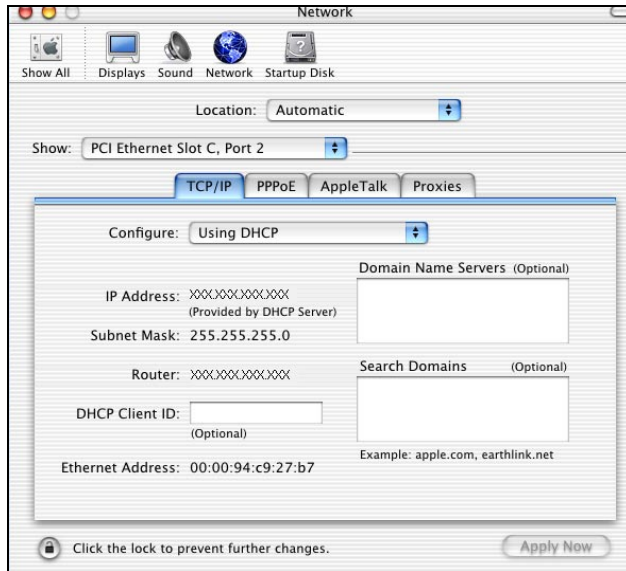
After you have restarted your computer, follow the steps below to configure your network settings.

1. Go to *System Preferences* on your desktop and select **Network**. In the *Network* screen that appears, select *Show: Active Network Ports* and click the box to choose the PCI Ethernet card slot where you have installed the adapter.

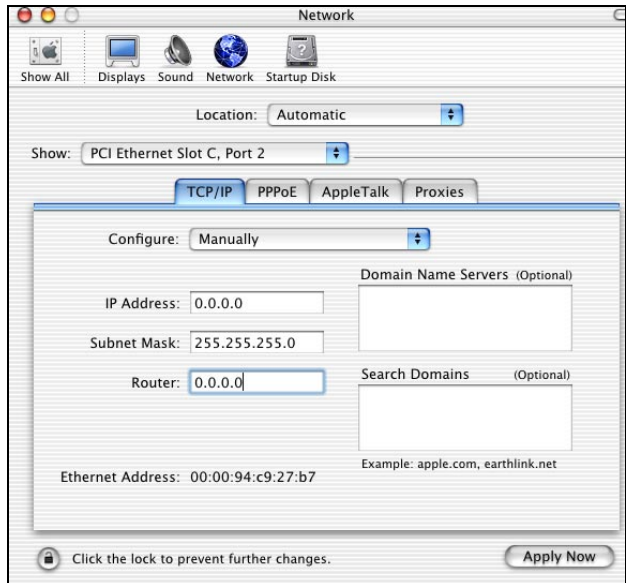


2. Click the **Apply Now** button. The screen will show the options for your network settings (TCP/IP, PPPoE, etc.).

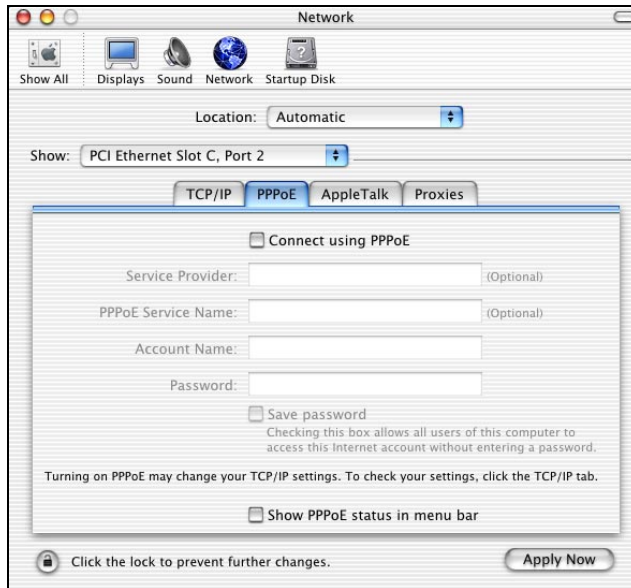
3. Make sure that the *Show:* field shows the PCI Ethernet slot where you have installed the adapter. You may configure TCP/IP automatically by using DHCP. You will receive an IP address from your DHCP server.



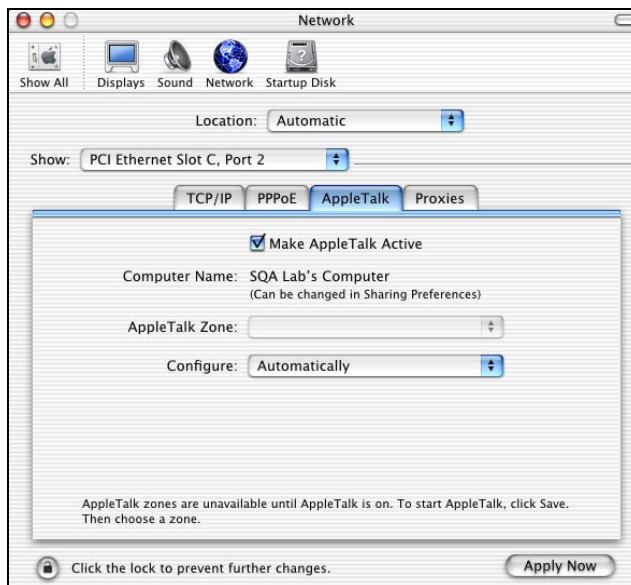
4. If you do not want to use DHCP, select *Configure: Manually* from the drop down menu and enter the IP address assigned by your ISP. Click **Apply Now** to have your changes take effect.



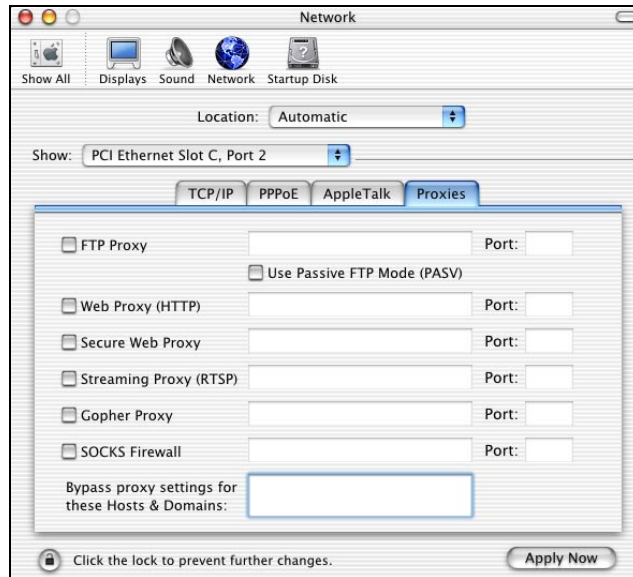
5. If your ISP requires you to use PPPoE, select the *PPPoE* tab and enter the required information in the appropriate fields. Contact your ISP for further information. Click **Apply Now** to make your changes take effect.



6. Next, select the *AppleTalk* tab and check the box to make AppleTalk active. After AppleTalk is on, you may choose an AppleTalk zone. Asanté recommends that you select *Configure: Automatically*, unless you are familiar with configuring an AppleTalk network. Click **Apply Now** to save your configuration.



7. If desired, select the *Proxies* tab to configure the IP addresses and port numbers for FTP, Web and other Proxies. Click **Apply Now** to save the changes that have been made. Consult your network administrator for more information.



8. The network configuration is complete.



Asanté Technologies, Inc.  
821 Fox Lane  
San Jose, CA 95131  
USA

**SALES**

800-662-9686 Home/Office Solutions  
800-566-3787 Enterprise Solutions  
408-435-8388 General Information

**TECHNICAL SUPPORT**

801-566-8991: Worldwide  
801-303-3787: Fax  
www.asante.com  
[support@asante.com](mailto:support@asante.com)

Copyright © 2001 Asanté Technologies, Inc. All rights reserved. No part of this document, or any associated artwork, product design or design concept may be copied or reproduced in whole or in part by any means without the express written consent of Asanté Technologies, Inc. Asanté is a registered trademark and the Asanté logo is a trademark of Asanté Technologies, Inc. All other brand names or product names are trademarks or registered trademarks of their respective holders.

Rev. A, 12/01