

FriendlyNET-Home USB to Parallel Adapter

User's Manual

Asanté Technologies, Inc.

821 Fox Lane

San Jose, CA 95131

www.asante.com

1.800.662.9686

Part Number: 06-00524-00 Rev. A



Introduction

Asanté FriendlyNET-Home USB to Parallel Adapter is a bridge that links the traditional IEEE-1284 parallel interface to the Universal Serial Bus(USB) interface. It is easy to install and setup. FriendlyNET-Home USB to Parallel Adapter is Bus powered and does not need any external power.

Key Feature

- Conforms to USB REV. 1.1
- Connect a parallel printer to USB port and can work with your current Windows printer drivers
- Compatible with Windows 95/98, OSR2.1
- Bus-power support
- Outstanding quality and reliability

Technical Specification

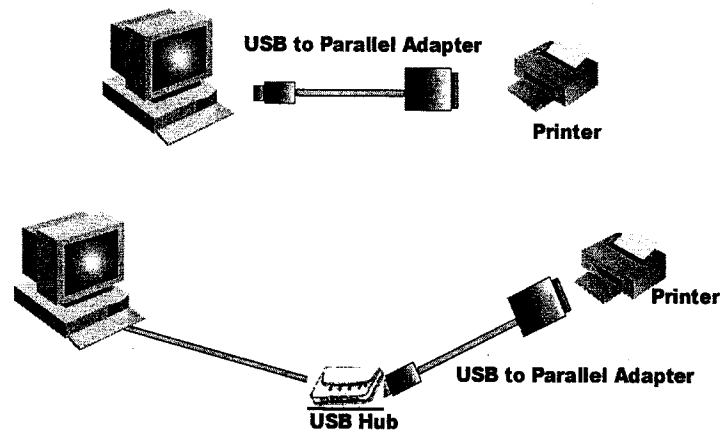
Standard	IEEE-1284 (parallel) and USB Ver. 1.1
Connector	USB type A & Centronics 36 pin male
Power	Bus Power
Performance	Up to 1.2MB/S (ECP mode)
Software	Win 95/98 driver supported
Cable Length	1.8m(6ft.)
Weight	110g
Temperature	0°C~40°C (Operating) -20°C~70°C (Storage)
Humidity	10~90%
Certification	FCC, CE mark

Hardware and DOS Requirement

- Personal computer with Pentium CPU (or higher):
 - 16M bytes RAM
 - With USB interface
- Printer with Centronic 36 female connector.
Operating systems: Win95(OSR VER.2.1) or Win98

Hardware Installation

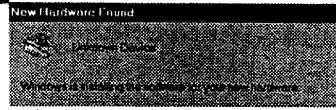
- A. Start the Windows operating system
- B. Plug the USB to Parallel Adapter's Centronic 36 pin port into the printer parallel port
- C. Plug the USB to Parallel Adapter's USB port into PC's USB port or USB Hub
- D. Turn the printer power on and begin the software installation



Software Installation

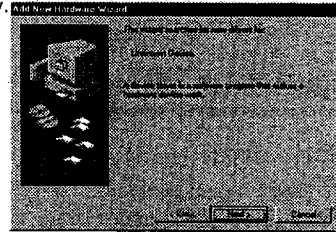
Step 1.

Plug the USB to Parallel Adapter into USB connector of PC, Windows 98 prompts "New Hardware Found" window



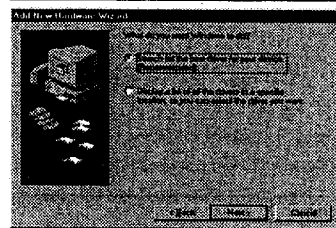
Step 2.

This "Add New Hardware Wizard" window means that Windows 98 is attended to search a suitable driver for this New Hardware.



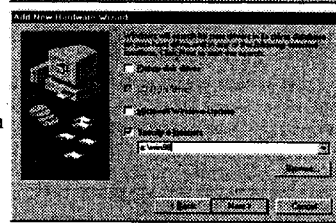
Step 3.

Windows 98 prompts you to decide the way of driver installation. Choose "Search for the best driver for your device" and then click "Next" button.



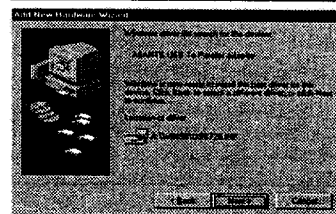
Step 4.

Insert driver diskette to floppy A:, and choose "Specify a location", and type in "a:\win98".



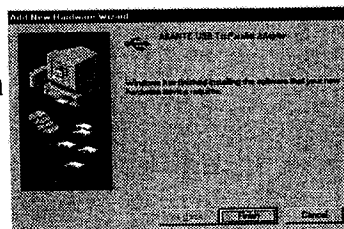
Step 5.

Windows 98 finds the driver of the Asanté USB to Parallel Adapter, then click "Next".



Step 6.

Windows 98 finishes installing the software for the Asanté USB to Parallel Adapter, click "Finish"



Packing Including

- One USB to Parallel Adapter
- One driver diskette
- One User's Manual

Note:

- A. Do not unplug USB to Parallel Adapter while printing
- B. If you want to plug or unplug USB to Parallel Adapter while host is on, please plug or unplug USB side first, and then printer side
- C. The USB to Parallel Adapter can not work under MS-DOS system
- D. The USB to Parallel Adapter will only work with printers that have Centronic 36 female connector

FCC Statement

This equipment can generate, use and radiate radio frequency energy and, if not installed and used in accordance with the instructions in this manual, may cause interference to radio communications. This equipment has been tested and found to comply with the limits for a Class B computing device pursuant to Subpart J of Part 15 of the FCC rules, which are designed to provide reasonable protection against radio interference when operated in a commercial environment. Operation of this equipment in a residential area is likely to cause interference, in which case the user, at his own expense, will be required to take whatever measures are necessary to correct the interference.

CE Declaration of conformity:

This equipment complies with the requirements relating to electromagnetic compatibility, EN 55022 class B for ITE and EN 50082-1. This meets the essential protection requirements of the European Council Directive 89/336/EEC on the approximation of the laws of the Member States relating to electromagnetic compatibility.



ASANTÉ TECHNOLOGY, INC., 821 FOX LANE, SAN JOSE, CA 95131
Phone: 1.800.662.9686, **Fax:** 801.566.3787, **E-mail:** sales@asante.com
Web site: www.asante.com

Trademarks

All company, brand, and product names are trademarks or registered trademarks of their respective companies.

© Copyright 1999 Asanté Technologies, Inc. All rights reserved. No part of this documentation may be reproduced, translated, adapted in any form

#4731020P00D5