

**Network Adapter Configuration Guide for  
Microsoft® Windows XP®**

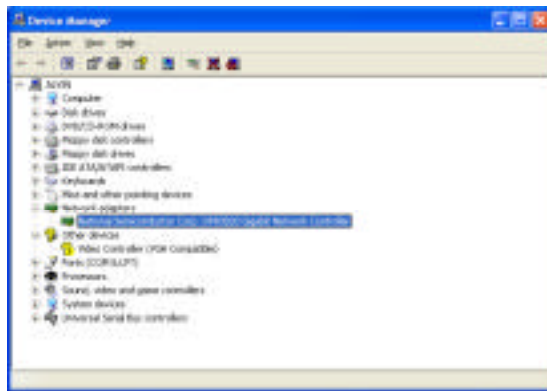
## Hardware Installation

Asanté and our technology partners have produced, designed and certified drivers for our most popular networking products. When a working copy of Windows XP has been correctly installed, it will, in most cases, automatically install the appropriate driver (see the tables below for a list of products and their certified drivers). Simply follow the steps below to install your network adapter card.

1. With the computer turned off, insert the network adapter card into the PCI slot. Make sure that it is firmly seated in the slot.
2. Connect a Category 5 or better network cable from the hub, switch or router to the RJ45 port of the adapter. For further information, see the installation guide that came with your adapter.
3. Turn on the power to your computer and allow it to boot to the desktop.

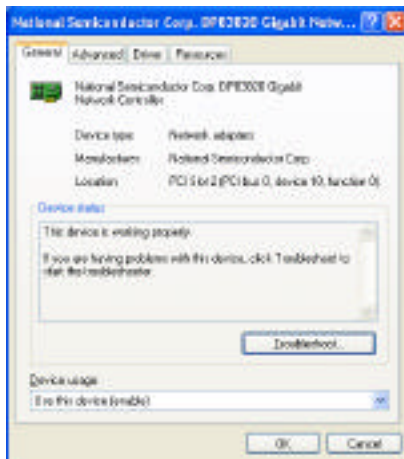
Windows will automatically detect the new hardware and install the appropriate driver. To view the installed driver, follow the steps below:

1. From the *Start* menu, right-click **My Computer** and select *Properties*.
2. Select the *Hardware* tab and click on **Device Manager**.
3. Double-click on **Network Adapters** to view the installed driver.

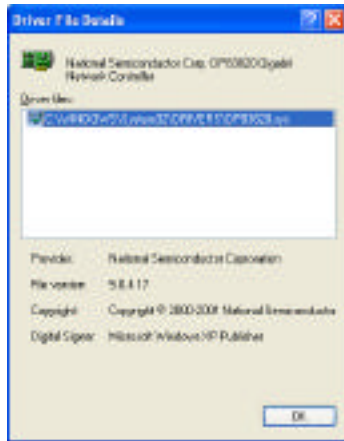


**Note:** Windows XP may identify the network adapter as being from a vendor of the compatible driver list, rather than from Asanté. This is normal.

4. Highlight and right-click on the adapter and select *Properties*.



5. Select the *Driver* tab and click on **Driver Details**.



## Asanté Network Adapters

The following tables indicate which of Asanté's network adapters are compatible with Windows XP certified drivers:

### 10/100/1000 Gigabit Ethernet

Product	Model	Bus	Plug and Play	Driver
GigaNIX	1000SX	32/64-bit PCI	No* *installs wrong driver	XP installs the National DP83820 driver for the National Copper Gigabit Card.. Remove & install Asante driver.
GigaNIX	1000TA	32/64-bit PCI	Yes	National DP83820
GigaNIX	1000TP C	32/64-bit PCI	Yes	National DP83820
GigaNIX	1000T	32/64-bit PCI	Yes	3Com Gigabit Ethernet Server NIC <sup>1</sup>
GigaNIC	1064SX	32/64-bit PCI	No	Not available

### 10/100 Fast Ethernet

Product	Model	Bus	Plug and Play	Driver
FriendlyNET 10/100	695	PCI	Yes	National DP83815 <sup>1</sup>
FriendlyNET 10/100	595	PCI	Yes	SIS 900
AsantéFAST 10/100 Rev B	590	PCI	Yes	LC LC82C115 <sup>1</sup>
FriendlyNET 10/100	586	PCI	Yes	LC LC82C115 <sup>1</sup>
AsantéFAST 10/100	493	PCI	Yes	Intel 21140
AsantéFAST 10/100 Rev B	198	PCI	Yes	LC LC82C115 <sup>1</sup>

### Wireless (IEEE 802.11b)

Product	Model	Bus	Plug and Play	Driver
AeroLAN PCMCIA	AL1011	PCMCIA	Pending	Under development, beta driver available Q4/2001
AeroLAN USB	AL2011	USB	Pending	Under development, beta driver

<sup>1</sup> Windows XP incorrectly identifies the Asanté network adapter. However, Windows does correctly install a compatible driver.

## Updating the Driver

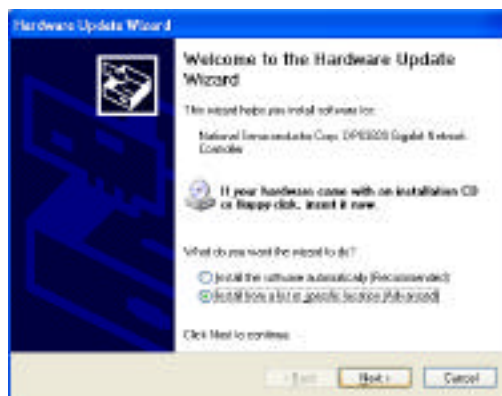
Asanté strongly recommends that you use the driver that Windows XP selects. Using an Asanté driver will result in Windows XP warning like the one shown below:



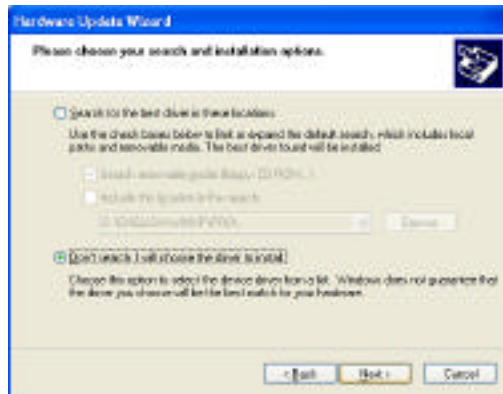
However, in situations when an update is required (i.e. bug fixes), you will need to install Asanté's driver instead. If you should experience compatibility issues, contact Asanté Technical Support for assistance.

Follow the steps below to update the installed driver:

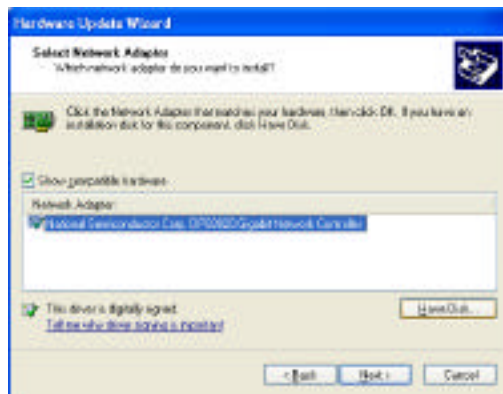
1. From the *Start* menu, right-click **My Computer** and select *Properties*.
2. Select the *Hardware* tab and click on **Device Manager**.
3. Double-click on *Network Adapters* to view the installed driver.
4. Right-click the adapter and select *Properties*.
5. Select the *Driver* tab and click on **Update Driver**.
6. The Hardware Update Wizard window appears. Insert the floppy disk or CD. Select the option *Install from a list of specific hardware manufacturers* and click **Next**.



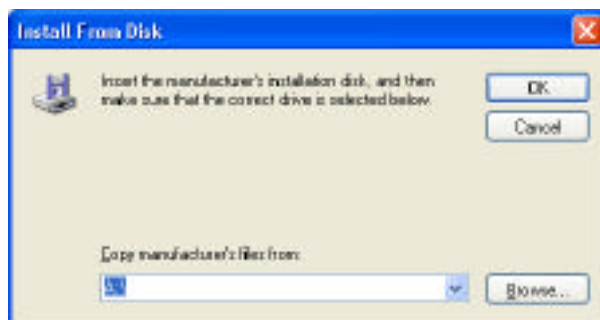
7. In the next screen, select the option *Don't search. I will choose the driver to install*. Click **Next**.



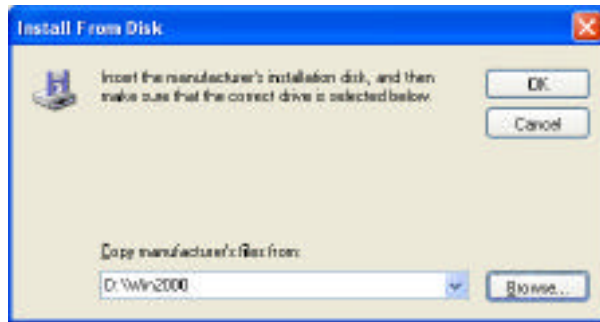
8. Next, click **Have Disk...**



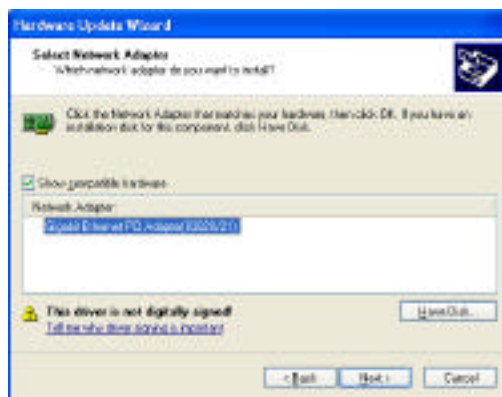
9. Insert the diskette or CD, if you haven't already done so. Click **Browse** to select the path to the driver.



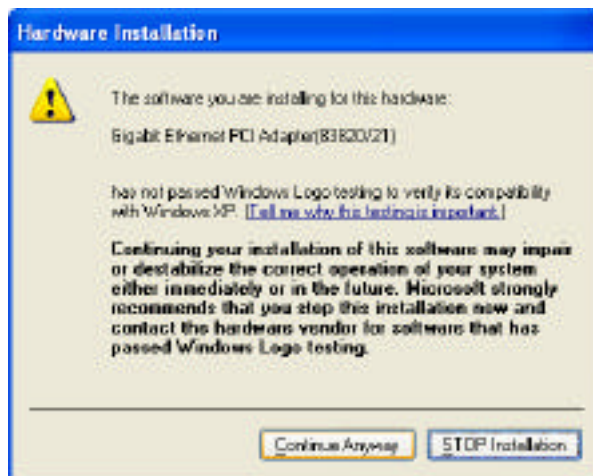
10. Once you have selected the path to the driver, click **OK**.



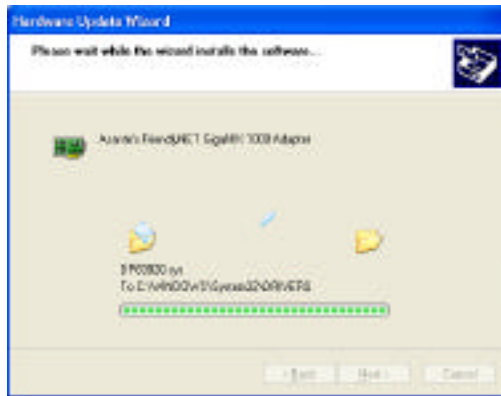
11. Highlight the updated driver, and click **Next**.



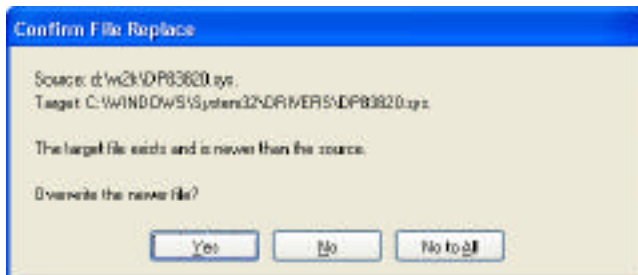
12. The Wizard will begin to install the software, but will stop to warn that the software you are installing has not passed Windows Logo testing. Click **Continue Anyway**.



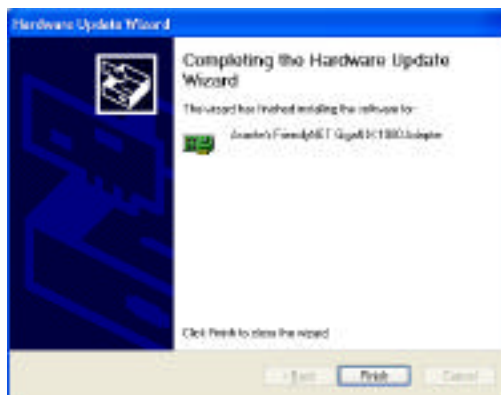
You will see Wizard continue the software update.



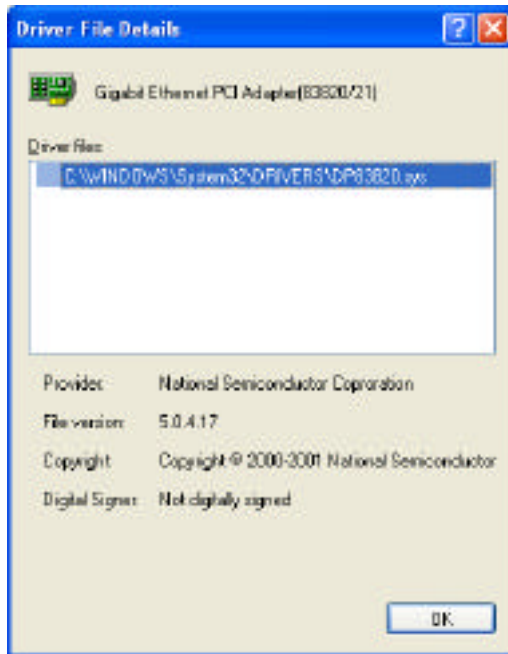
13. Windows may warn that the target file exists and is newer than the source. Click **Yes** to overwrite the newer file.



14. Windows has completed the installation. Click **Finish** to close the Wizard.



- Windows will automatically display the *Driver File Details* window, or you may view the newly installed driver anytime by repeating the steps in the section *Hardware Installation*.





Asanté Technologies, Inc.  
821 Fox Lane  
San Jose, CA 95131  
USA

**SALES**

800-662-9686 Home/Office Solutions  
800-566-3787 Enterprise Solutions  
408-435-8388 General Information

**TECHNICAL SUPPORT**

801-566-8991: Worldwide  
801-303-3787: Fax  
www.asante.com  
[support@asante.com](mailto:support@asante.com)

Copyright © 2001 Asanté Technologies, Inc. All rights reserved. No part of this document, or any associated artwork, product design or design concept may be copied or reproduced in whole or in part by any means without the express written consent of Asanté Technologies, Inc. Asanté is a registered trademark and the Asanté logo is a trademark of Asanté Technologies, Inc. All other brand names or product names are trademarks or registered trademarks of their respective holders.

Rev. A, 12/01