

## F. User's Guide Addendum

1. The front panel status indicators have been revised on these routers:

FriendlyNET Router	Part Number
FR3004	61-20617-01 Rev C
FR3004LC	61-20618-01 Rev C

- **Power** LED stays ON when the router is ready for operation.
- **WAN** LED shows link and status for external cable or DSL modem only.
- For all LAN ports (1 through 4), the left LED shows Link-Activity and the right LED shows 100 Mbps operation.

2. During configuration, if the router is **not** accessible, try disabling your browser's proxy setting.

3. When attaching an external dial-up modem to your FR3004LC's COM port, use an ordinary, **straight through** (not null modem) serial cable.

4. For Windows 2000 users with the FR3004LC, use the **Windows NT** driver for the print server. See the technical note on the Asanté website for assistance.



Asanté Technologies, Inc.  
821 Fox Lane  
San Jose, CA 95131  
408-435-8388  
www.asante.com

SALES  
800-662-9686 Home/Office Solutions  
800-303-9121 Enterprise Solutions

TECHNICAL SUPPORT  
801-566-8991 Worldwide  
801-566-3787 FAX

Copyright © 2000 Asanté Technologies, Inc. Asanté is a registered trademark of Asanté Technologies, Inc. FriendlyNET and FriendlyStack are trademarks of Asanté Technologies, Inc. All other names or marks are trademarks or registered trademarks of their respective owners. All features and specifications are subject to change without prior notice.



## FriendlyNET™ Cable/DSL Router FR3004 Series



## Quick Start Guide

This guide will help you install and configure your new FriendlyNET Cable/DSL router. For detailed instructions, please consult your *User's Guide*.

### A. Getting Started

You can use the factory default IP address setting provided with the FriendlyNET router and configure your networked computer to automatically accept the TCP/IP (IP address, gateway and DNS) settings from the router.

#### Factory default settings are:

IP address: 192.168.123.254  
Subnet mask: 255.255.255.0

If applicable, your Internet Service Provider (ISP) will provide you with this information to set-up your router:

- WAN IP address and subnet mask
- Primary and secondary domain name server (DNS) IP addresses
- Domain name (usually the same as the ISP's domain name unless you have registered your own domain name)

After confirming these settings, follow the steps below to install and configure your router.

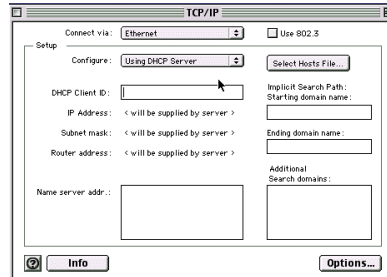
### B. Installing the Router

1. Turn off the power to your computers, modem and router.
2. Connect the Ethernet cable from a LAN port on the router to the network card of your computer. Repeat the process to connect other computers to the router.
3. Connect the network cable from your cable or DSL modem to the router's WAN port.
4. Optional: Connect the serial port of your modem to the COM port of the router (FR3004LC only) by using a null modem cable with your external modem. The phone line should be connected to the LINE port of your modem.

- Optional: Connect a parallel printer to the printer port using a parallel printer cable (FR3004LC only).
- Power on the modem. Complete all necessary connections between the router, LAN, WAN, modem and printer. Connect the power outlet to the router.
- Power on the router. The router will enter a self-test mode where the STATUS light will remain on for a few seconds, blink and then turn off. When the STATUS indicator is off, the router is ready.
- Power on your computers.

### C. Configuring TCP/IP for Macs

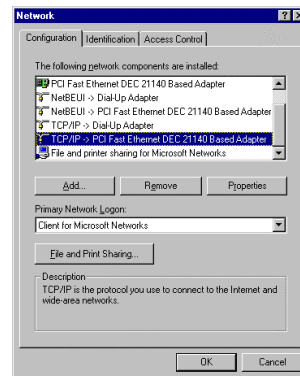
- Close all applications (especially browsers, email and others that require TCP/IP).
- Open the **TCP/IP Control Panel**.
- For **Connect via**, choose Ethernet built-in or the Ethernet adapter installed in your Mac.
- For **Configure**, choose **Using DHCP Server**. Close the dialog box and save your changes.



Repeat steps 2-4 to configure additional Macs on your network.

### D. Configuring TCP/IP for Windows PCs

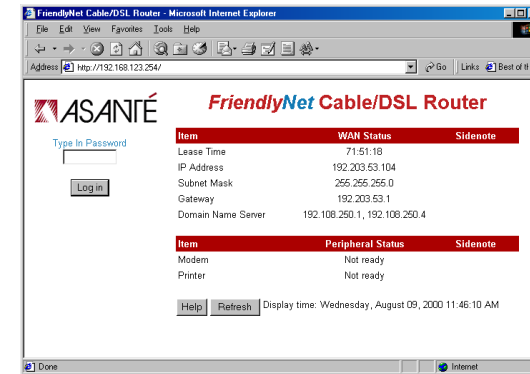
- From the Windows Start button on your PC, choose **Settings** and select **Control Panel**. Double-click the **Network** icon.
- Highlight the TCP/IP protocol line associated with your network card adapter in the Configuration Window.
- Click **Properties**. Click the **IP Address** tab. Select **Obtain an IP address automatically**. Click **OK**.
- Click **OK** again. Windows begins copying files to your computer.
- Click **Yes** to restart your computer with the new settings.



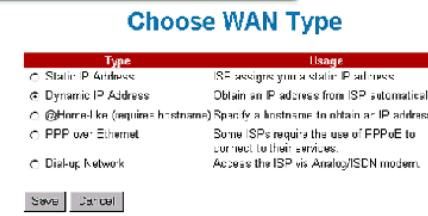
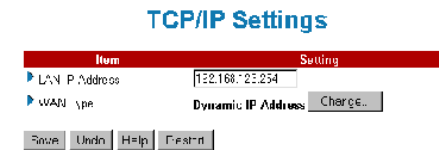
Repeat steps 1-5 to configure additional PCs on your network.

### E. Configuring the Router

- Open your web browser and type in the factory default URL setting of <http://192.168.123.254> in the browser address box. Press Enter. You will see the main Login Screen of the router.



- In the password field, type **admin** (factory default setting) and click on the **Login** button.
- On the left hand bar of the page, select **TCP/IP Settings** to configure your network using the default address setting of 192.168.123.254.



- For WAN Type, click on the **Change** button. Select your WAN type (Static IP, Dynamic IP, @Home-like, PPPoE or Dial-up) and click on **Save**.
- You will be prompted to complete additional settings based on your WAN type. See the *User's Guide* for assistance.
- Click on **Save** to store your settings and re-start your router.

You may now begin using your router to share your Internet connections.