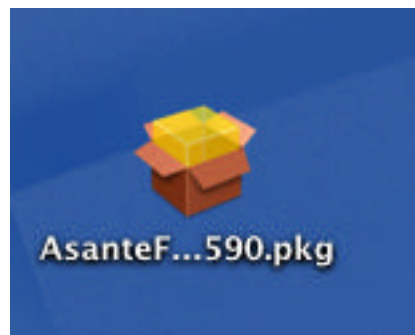


Asanté Technologies, Inc.
Installation Note for OSX Drivers
May 8, 2001

This installation note contains directions for the installation of the Asanté OSX driver for the 10/100 PCI, GigaNIX or GigaNIC family of Ethernet cards. Please follow the instructions below to install the OSX driver for your particular card.

1. Download the driver to your desktop or insert the CD. Locate the OSX folder found in the Power Macintosh folder and copy the appropriate OSX driver to your desktop.



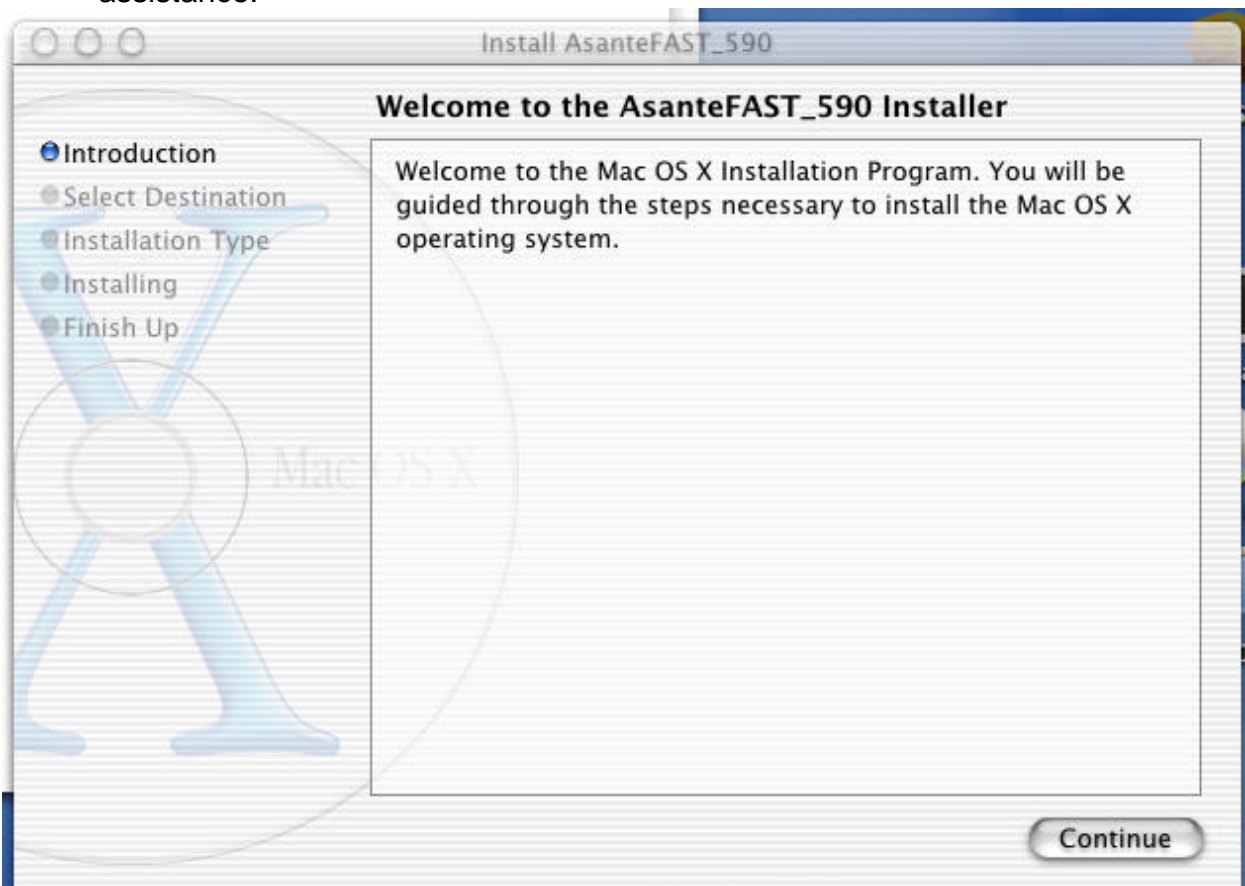
2. Launch the OSX package by double-clicking on the file. You will see the following screen. If you do not have an Administrator password, you will not be able to install the driver.



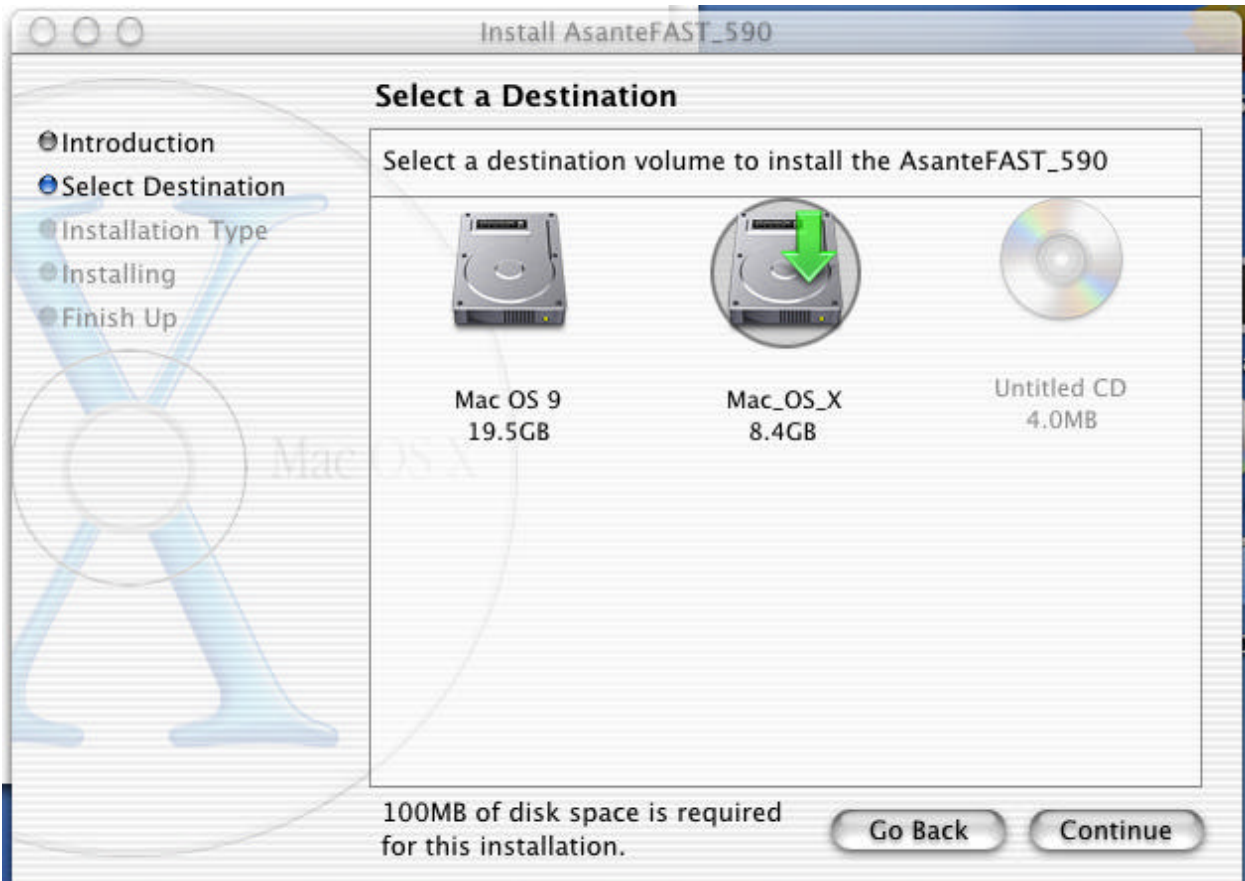
3. Click the lock. You will see a screen that requires an Administrator's name and password.



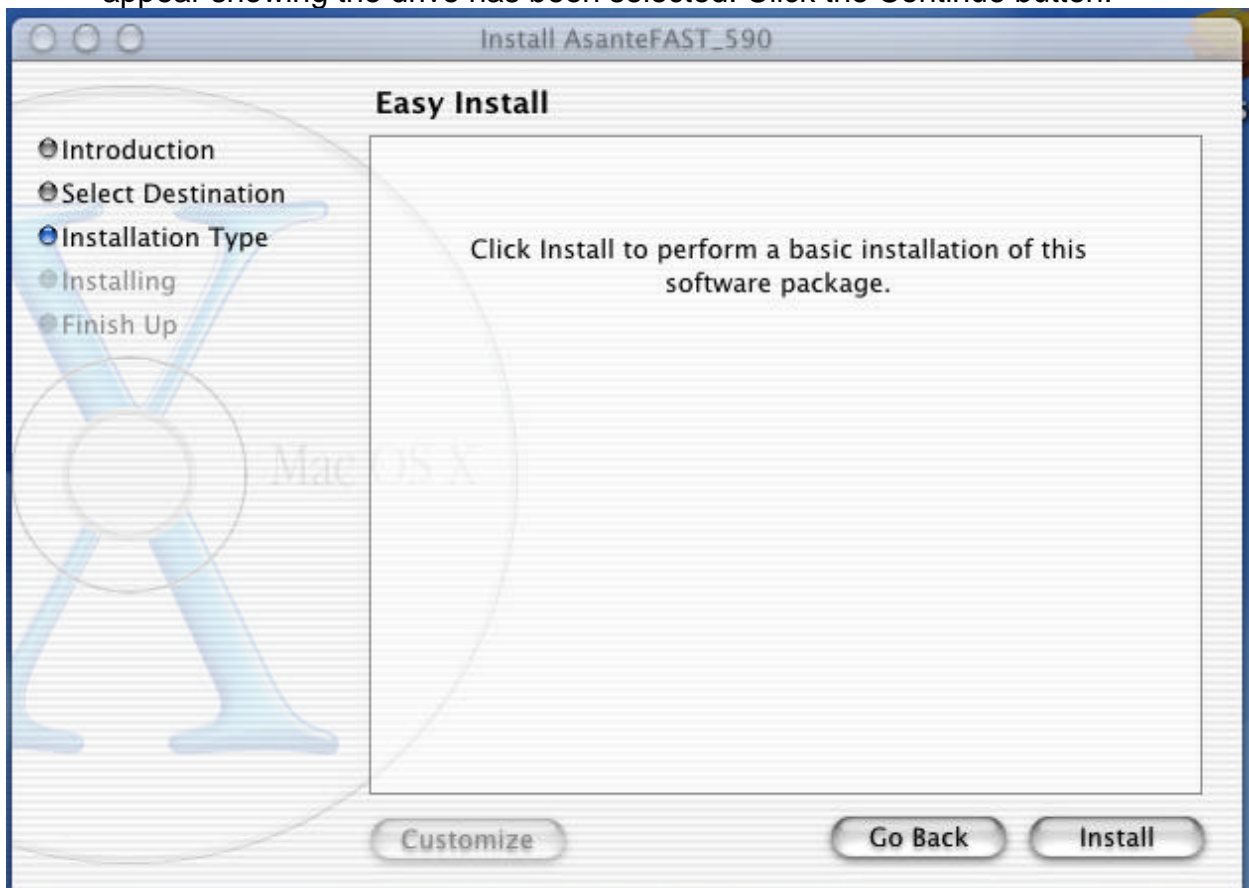
4. Enter the administrator password, then click OK. The administrator password is the password that you created when you installed OSX. If you do not know the administrator password, you will need to contact your MIS department for assistance.



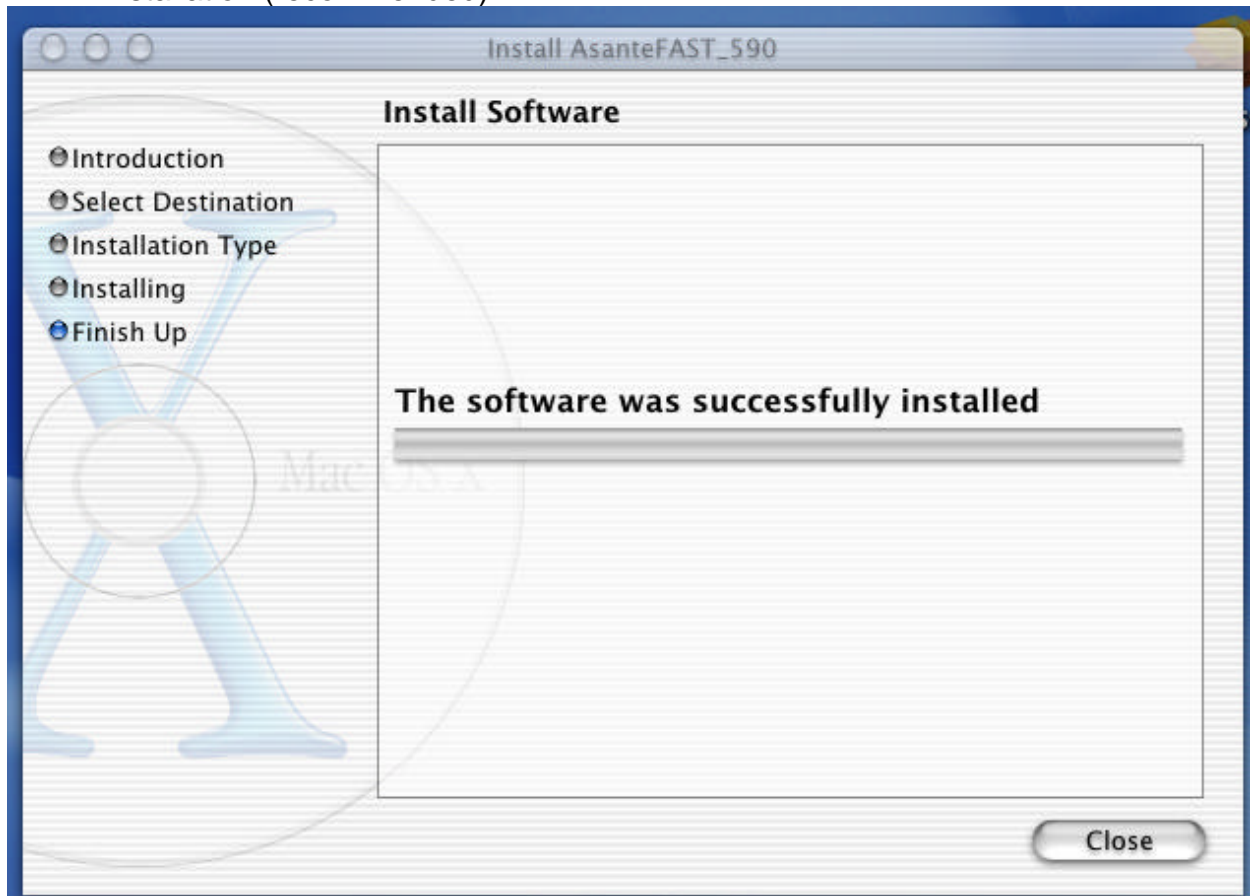
5. You will see a Welcome screen. Click the Continue button to proceed with the installation.



6. You will see a Destination screen. Click the OSX drive, and a green arrow will appear showing the drive has been selected. Click the Continue button.



7. You will see the Installation screen. Click the Install button to perform a Basic installation (recommended).



8. You will see a screen which states that the software was successfully installed. Click the Close button to close the window and complete the installation.
9. Depending upon your configuration, you may need to alter settings in the Network Control Panel. Refer to your OSX software documentation for assistance in configuring TCP/IP, Appletalk and other Network settings.