

Asante[®] FriendlyNET[®] AeroLAN[®] AL5410-G 2.0 Driver Installation

NOTE: Before installing the Asante FriendlyNET AeroLAN AL5410-G wireless adapter, Asante strongly recommends that you check with your computer manufacturer and install their current BIOS updates to your computer to ensure compatibility. Please refer to your computer manufacture's documentation/web site concerning this important matter.

Uninstalling Old Asanté FriendlyNET AeroLAN AL5410-G Utility and Driver

Before installing the new Asante FriendlyNET AeroLAN AL5410-G 2.0 driver, you must remove any previous Asante FriendlyNET AeroLAN AL5410-G drivers and utilities. If this is a first-time installation, go to the section "Installing Asante FriendlyNET AeroLAN AL5410-G 2.0 Utility and Driver."

Use the following steps to uninstall the Asante FriendlyNET AeroLAN AL5410-G utility and driver:

1. Go to the Windows Control Panel and click Add/Remove Programs.
2. Select the AeroLAN AL5410-G program from the list of installed programs.
3. Click on the Change/Remove button to uninstall. The InstallShield Wizard will remove the Asante FriendlyNET AeroLAN AL5410-G utility and driver.
4. Shut down the computer and eject the Asante FriendlyNET AeroLAN AL5410-G wireless card.

Your computer is now ready to install the new Asante FriendlyNET AeroLAN AL5410-G 2.0 utility and driver.

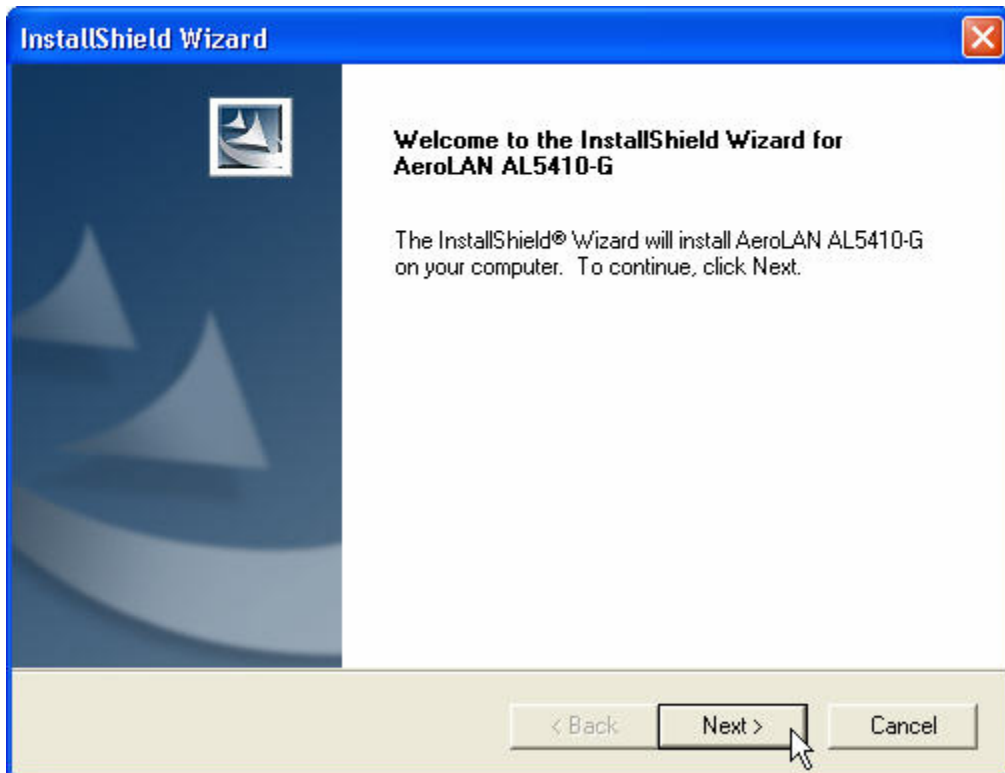
Installing Asante FriendlyNET AeroLAN AL5410-G 2.0 Utility and Driver

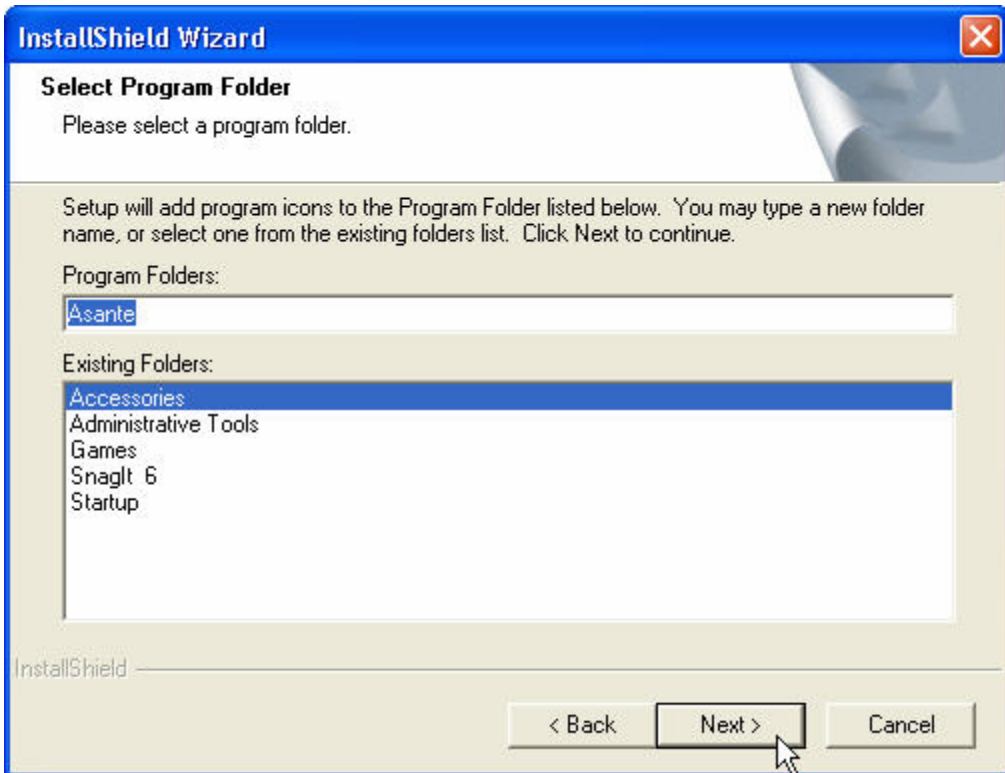
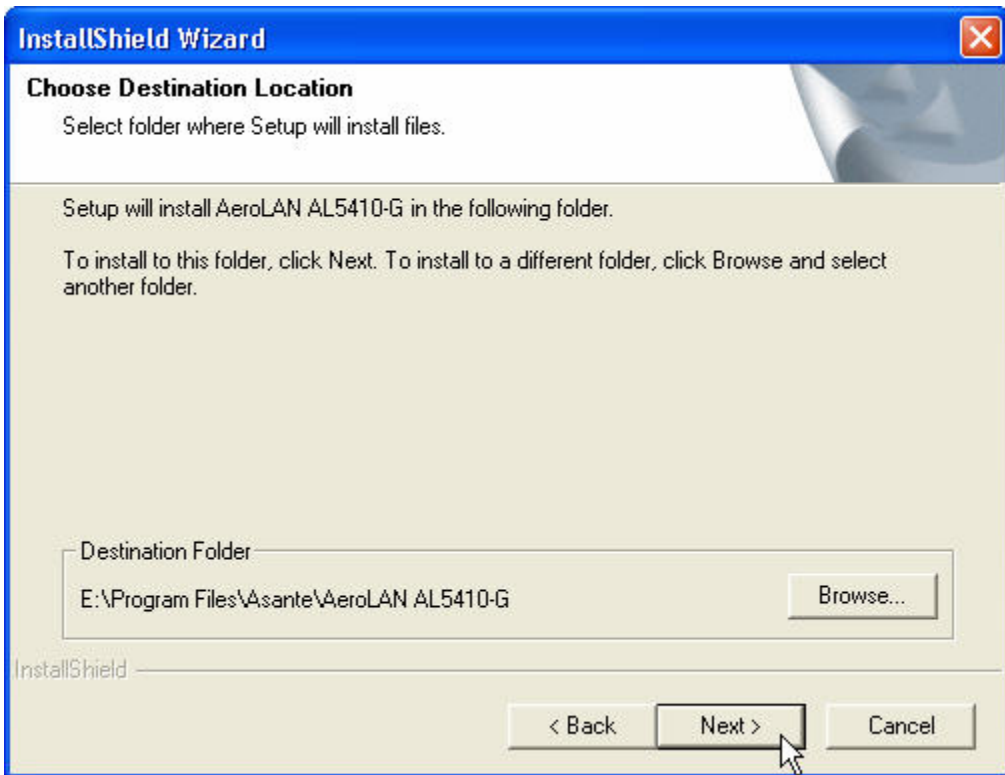
To install the Asante FriendlyNET AeroLAN AL5410-G 2.0 utility and driver, use the following steps:

1. Start your computer without the Asante FriendlyNET AeroLAN AL5410-G card installed.
2. Open the Asante FriendlyNET AeroLAN AL5410-G 2.0 utility folder. Click on the Setup.exe file.

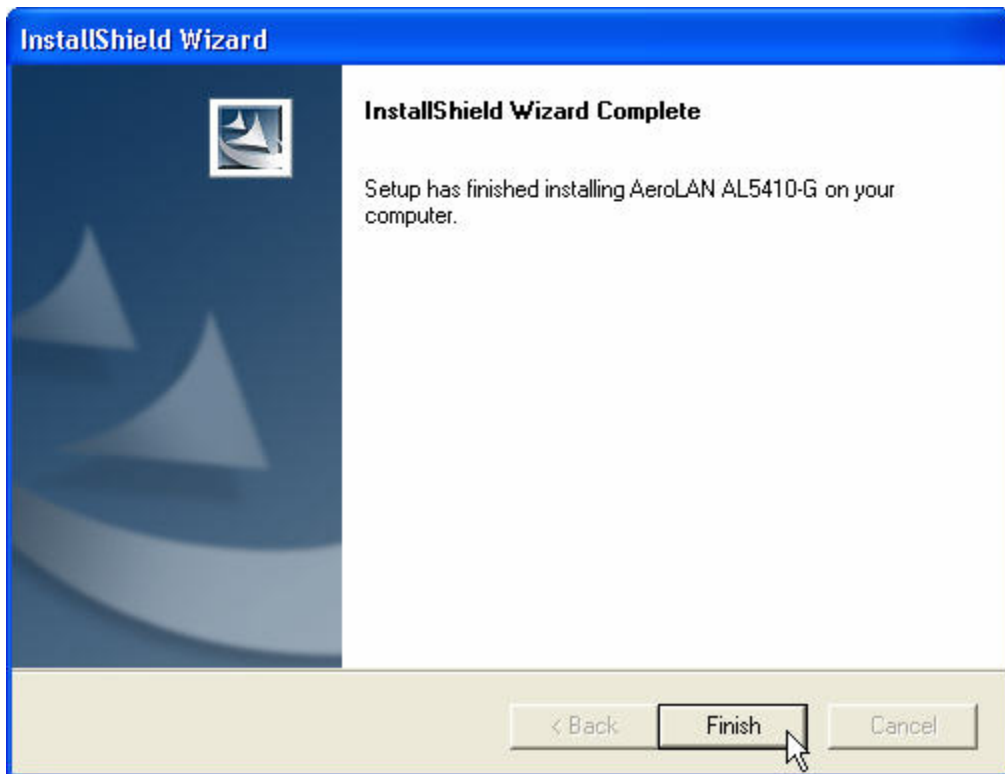


3. Follow the InstallShield Wizard's step-by-step instructions.





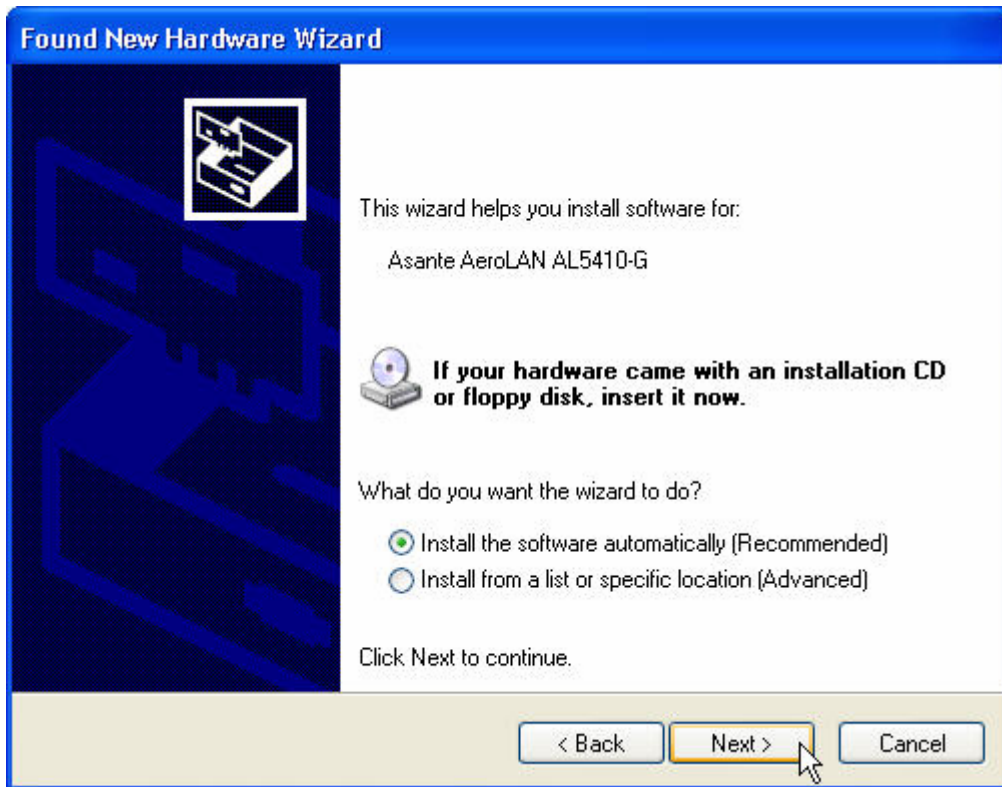
- Click Finish when the InstallShield Wizard has completed installing the Asante FriendlyNET AeroLAN AL5410-G utility and driver.



- Shut down your computer.
- Insert the Asante FriendlyNET AeroLAN AL5410-G card in your computer's CardBus slot. Restart your computer.



7. Windows will detect new hardware and launch the Windows Found New Hardware Wizard.
8. Select Install the software automatically (Recommended). Click Next.



9. If prompted by the Windows Logo Testing screen to STOP Installation, click Continue Anyway (does not apply to Windows Me or 98 SE).



10. Click Finish to complete the installation of your Asante FriendlyNET AeroLAN AL5410-G wireless card.



11. To use your Asante FriendlyNET AeroLAN AL5410-G card and utility, click on the Asante FriendlyNET AeroLAN AL5410-G utility icon located in the Windows System Tray.



12. Use the Asante FriendlyNET AeroLAN AL5410-G utility to connect to the wireless network of your choice.

