

Installation procedure for AeroLAN PCCard : AL 1011 , AL1211 or PCI : AL 3011

1 – If you are installing an AeroLAN **PCCard** AL1011 or AL1211 , double click AeroLAN_PCCardv1.2.4.dmg :



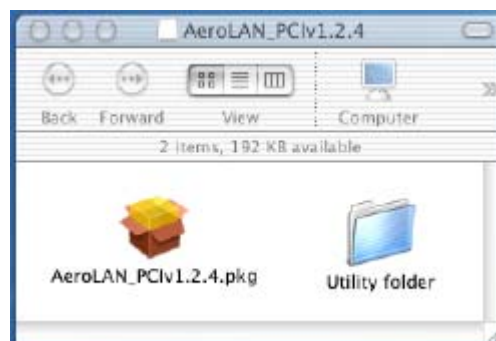
then open the mounted volume AeroLAN_PCCardv1.2.4 :



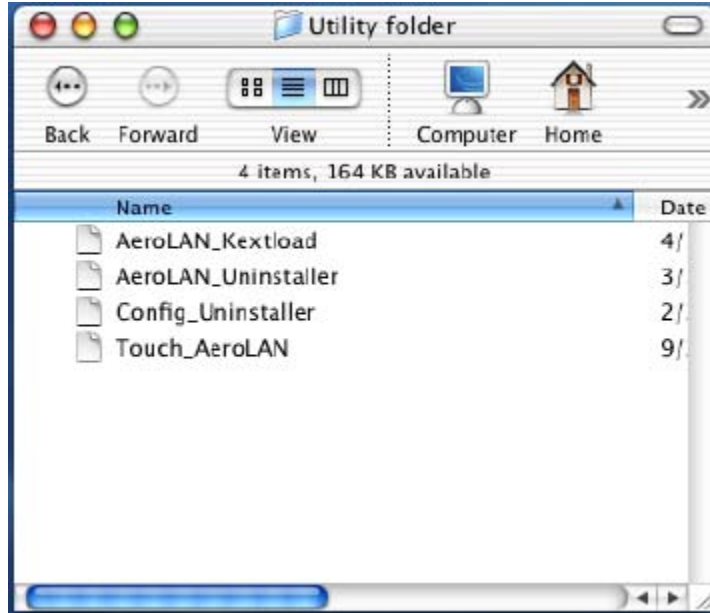
Or if you have AeroLAN_PCI AL3011, double click AeroLAN_PCIv1.2.4.dmg :



then open the mounted volume AeroLAN_PCIv1.2.4 :



2 – Open the Utility folder :



- AeroLAN_Kextload : to manually load the AeroLAN driver without reboot.
- AeroLAN_Uninstaller : to remove the driver and config file .
- Config_Uninstaller : to remove only the config file.
- Touch_AeroLAN : to make sure the AeroLAN Wireless application shows up in the System Preferences window.

3 – Run the AeroLAN_Uninstaller before update the driver.

4 – For **PCCard** : Run AeroLAN_PCCardv1.2.4.pkg to install the driver.
For **PCI** : Run AeroLAN_PCIV1.2.4.pkg to install the driver.

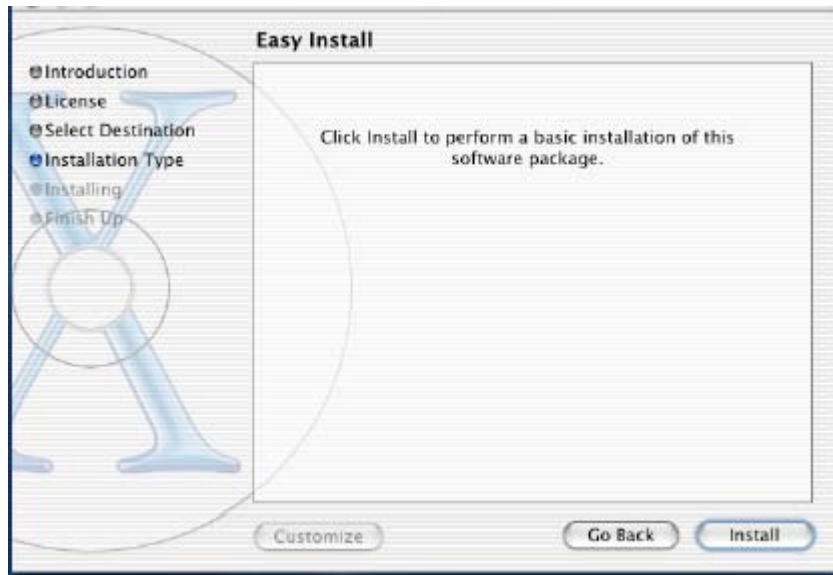
5 – Input the Administrative password and continue .



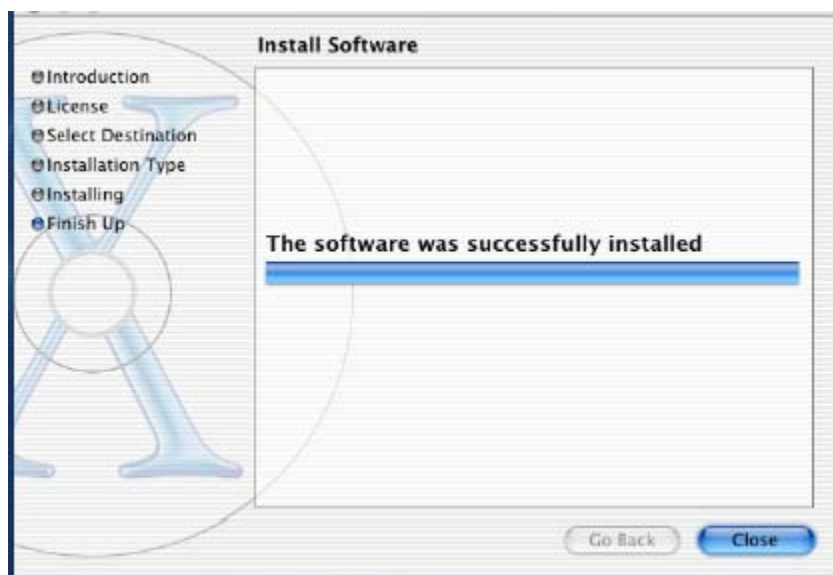
6 – Make sure you select the system volume that you want to install the driver :



7 – Then click Install :



8 – The installation is complete .

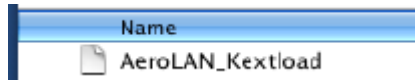


9 – Click ‘Close’, then run Touch_AeroLAN from utility folder, to make sure AeroLAN Wireless shows up in the System Preferences :

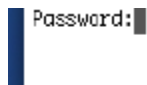


10 – **Restart** the system and go to step number 14.

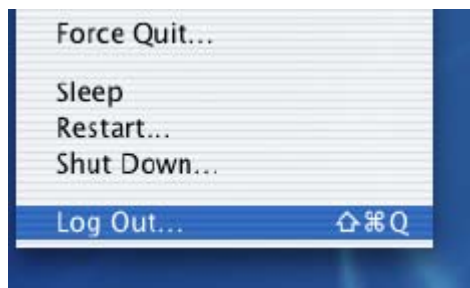
If you want manually load the driver without restarting the system, then run AeroLAN_Kextload from Utility folder, to load the AeroLAN Kernel driver :



11 – Type the Administrative password :



12 – Logout :



13 – Login again .

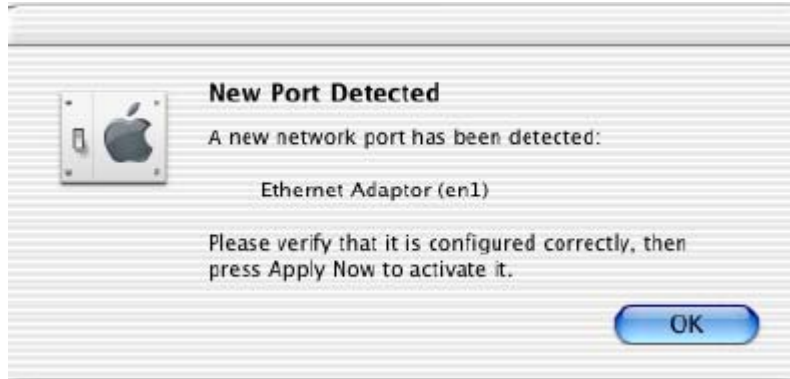
14 – Select System Preferences from the dock :



15 – Select Network icon :



16 – If this is the first time you are installing the AeroLAN Adapter , you will see this :



Click OK.

17 – Setup the Network configuration then click Apply Now :



If you want to join a specific network with or without WEP encryption enabled , then run AeroLAN Wireless in step 19.

18 – If you select using DHCP, AeroLAN will join the network with the strongest signal with WEP encryption disabled.



19 – If you want to join a specific network with or without WEP encryption enabled, then click 'Show All' and select AeroLAN Wireless icon :



20 – Enter the network name , check ‘WEP Enabled’ box if applicable :



21 - Select 64 or 128 bit password, then type the password (Apple Airport compatible).

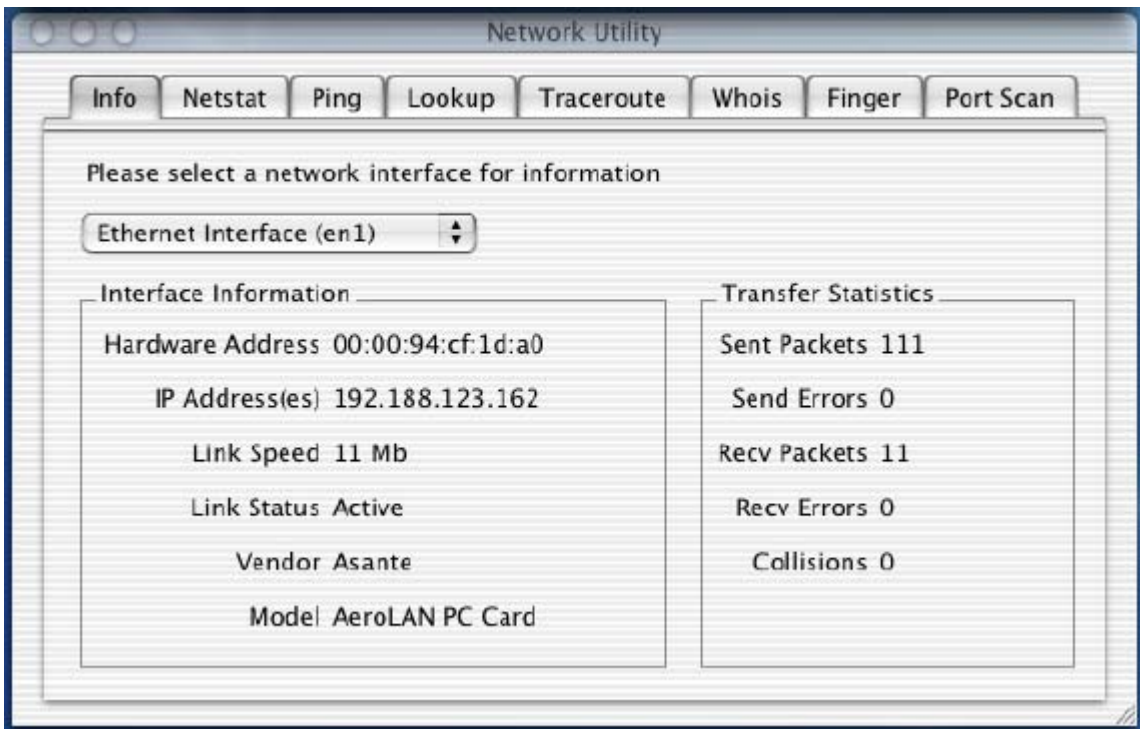


22 - Click 'Apply' to convert your password to Hex equivalent number.



make sure this matches with your Airport or AirPort Xtreme Base Station password or any Wireless Router with WEP encryption enabled (Hex equivalent number only).

23 – You can run Network Utility from the Application:Utility folder, to check the status:



24 – How to connect to your specific network with WEP encryption enabled right after login ?

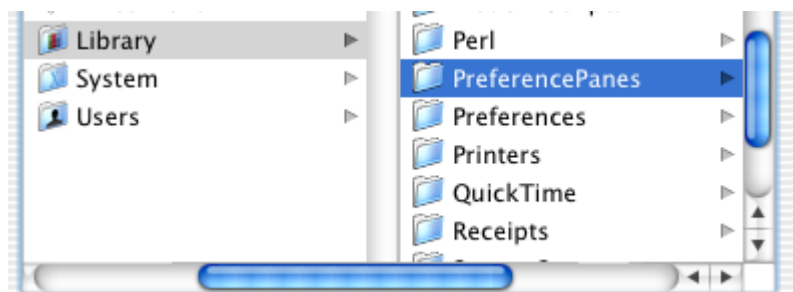
Select ‘Login Items’ from System Preferences window :



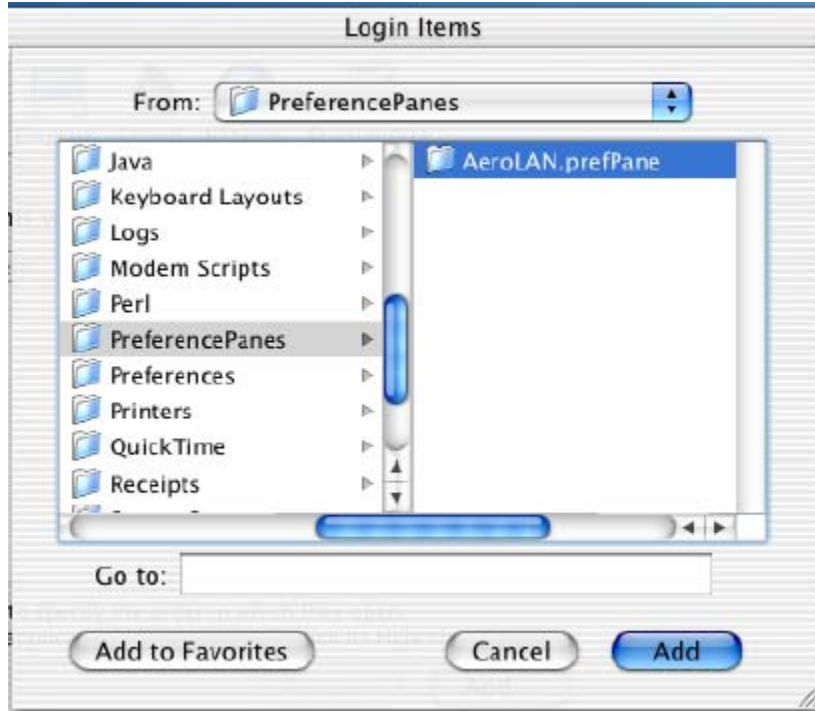
25 – Click ‘Add’ :



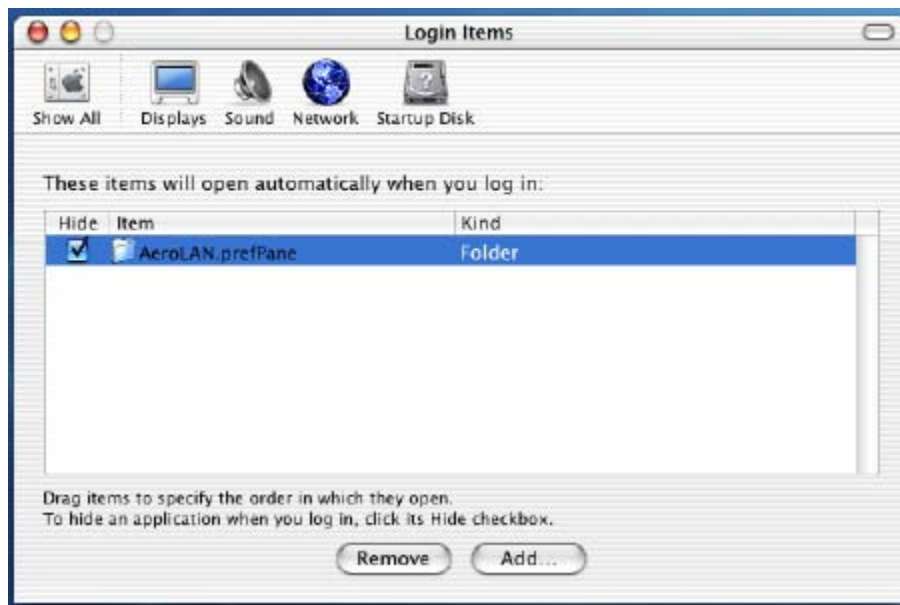
26 – Select Library , click PreferencePanes :



27 – Select **AeroLAN.prefPane**, then click ‘Add’:



28 – Check the ‘**Hide**’ box if you want an ‘AeroLAN Wireless’ window not to appear after login.



Now , if you reboot the system and login again, AeroLAN Wireless will launch automatically and connect to your selected network with WEP encryption enabled.