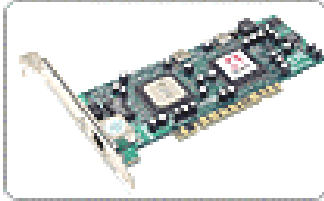


Asanté GigaNIX 1032TPC Windows 2000 Installation

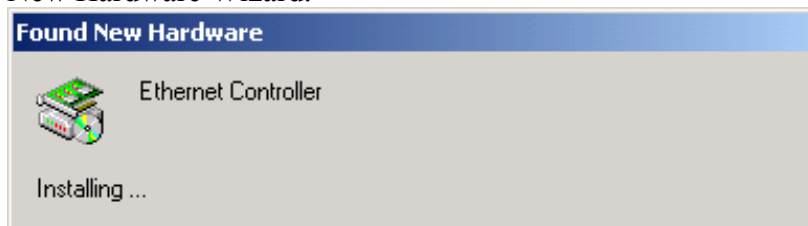
WARNING: Before installing the Asanté GigaNIX 1032TPC card, be sure to take appropriate precautions to ground yourself and the computer to prevent electrostatic discharge while installing the Asanté GigaNIX 1032TPC card. Serious damage to the Asanté GigaNIX 1032TPC card or computer may result if not properly grounded.

Installation:

1. Insert the Asanté GigaNIX 1032TPC card in 32 or 64-bit Bus Master PCI slot. Be sure the card is seated properly in the PCI slot before closing the computer case.



2. Start the computer. Windows 2000 will detect new hardware and start the Found New Hardware Wizard.



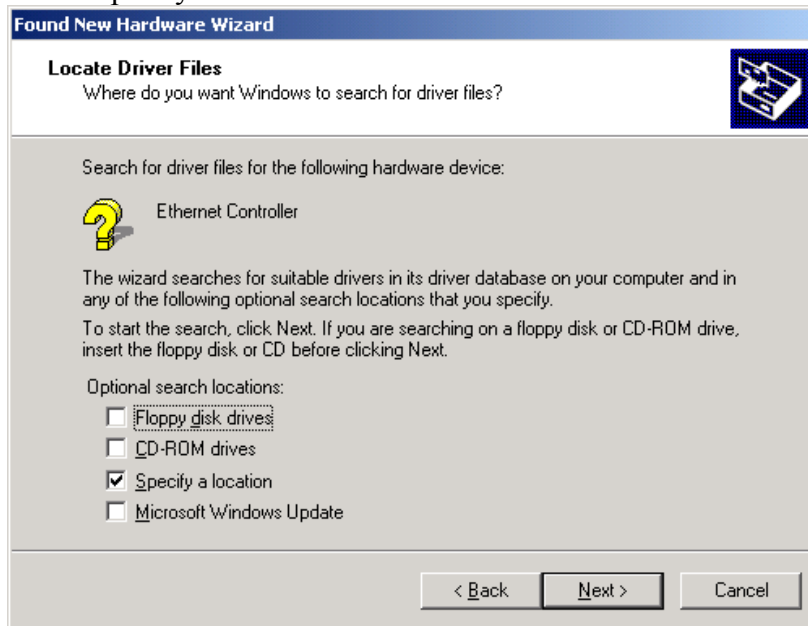
3. Click **Next**.



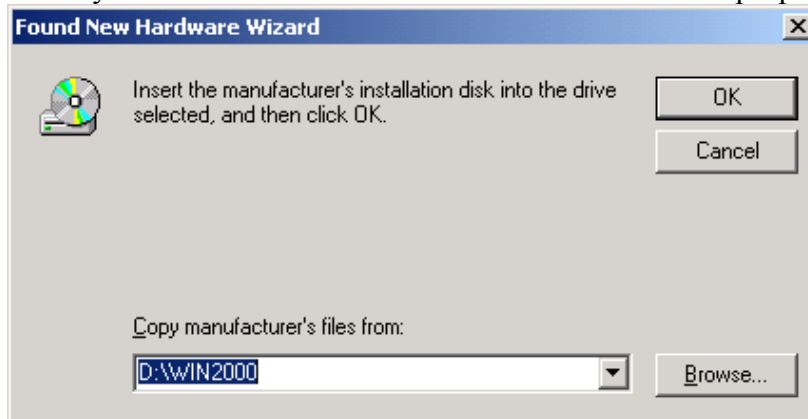
4. Select **Search for a suitable driver for my device (recommended)**. Click **Next**.



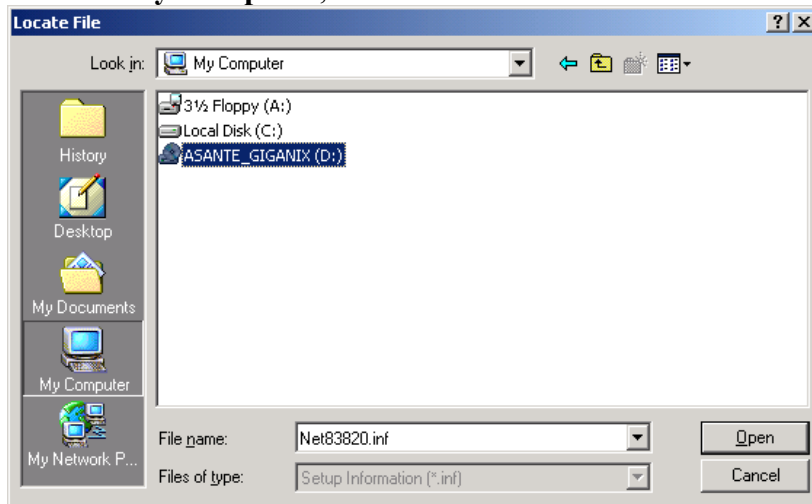
5. Select Specify a location. Click **Next**.



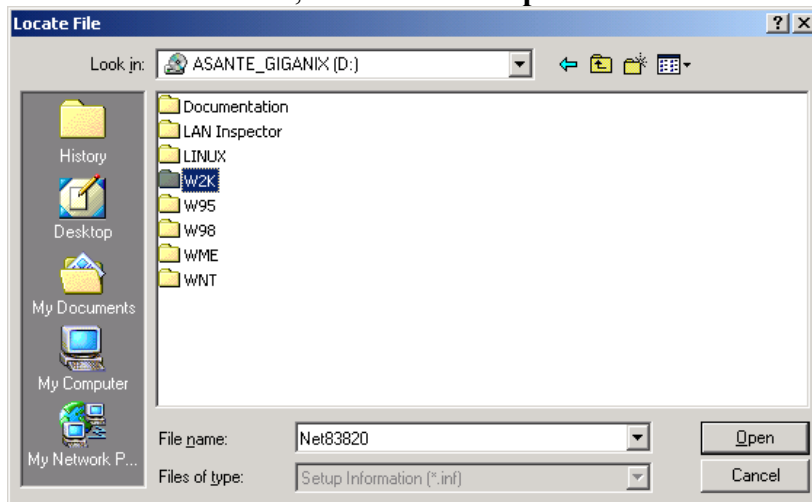
6. Insert your Asanté FriendlyNET GigaNIX 1000 and 1032TPC Ethernet Adapter CD in your CD-ROM drive. Click **Browse** to locate the proper driver location.



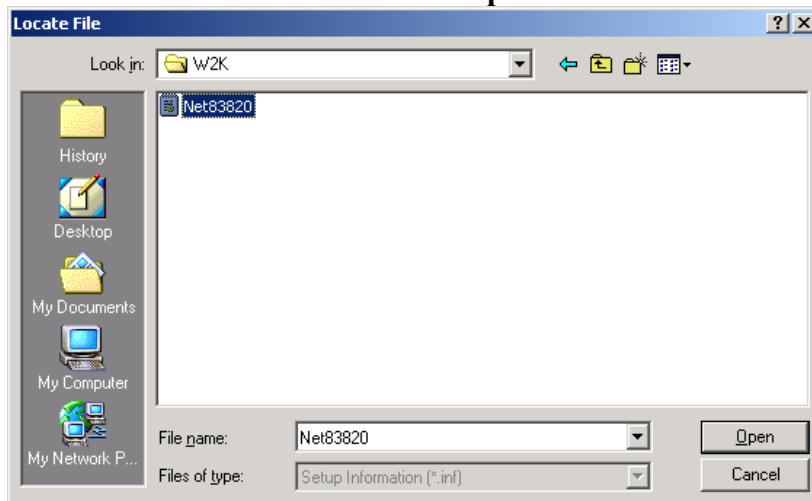
7. Click on **My Computer**, and then select the CD-ROM drive. Click **Open**.



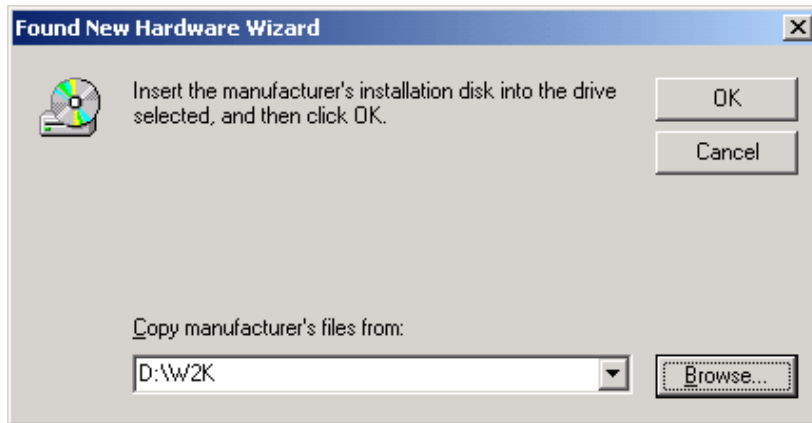
8. Select the W2K folder, and then click **Open**.



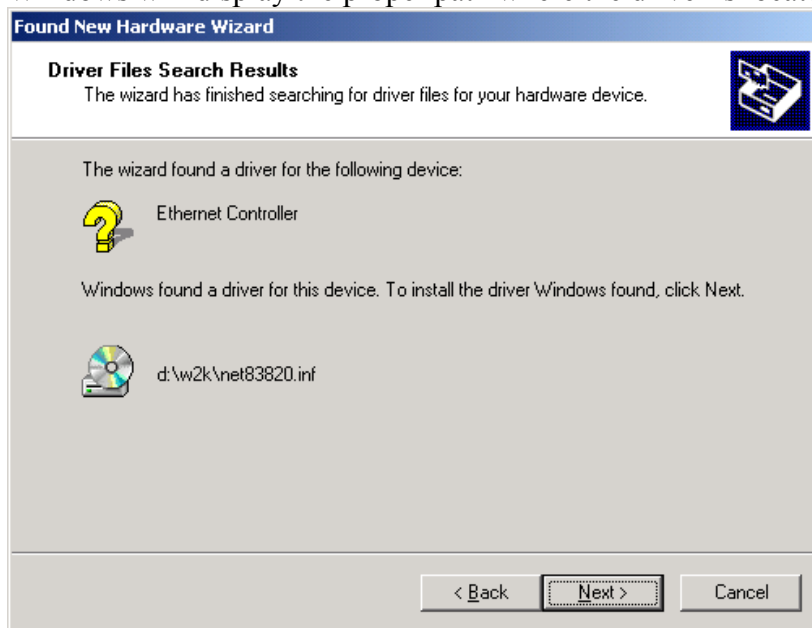
9. Select the Net83820.inf file. Click **Open**.



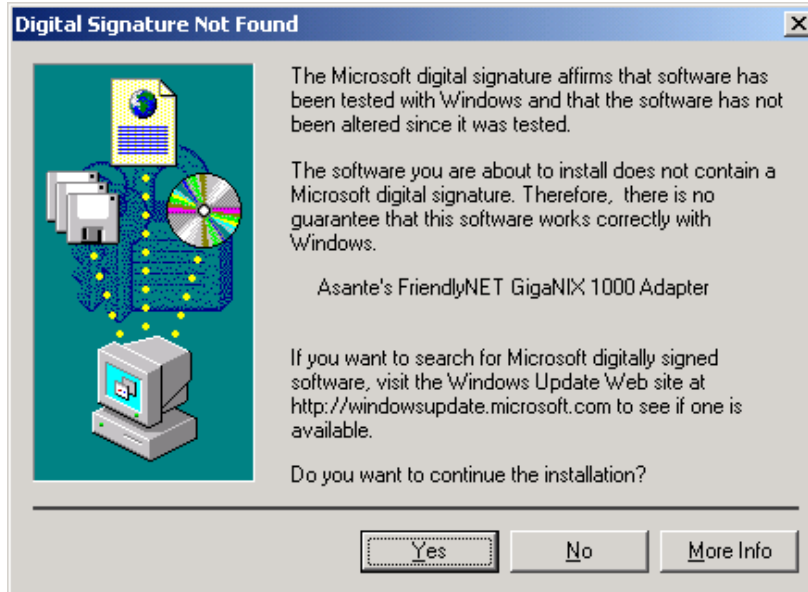
10. Click **OK** to install the driver.



11. Windows will display the proper path where the driver is located. Click **Next**.



12. Microsoft's digital signature window will appear. To continue the installation click **Next**.

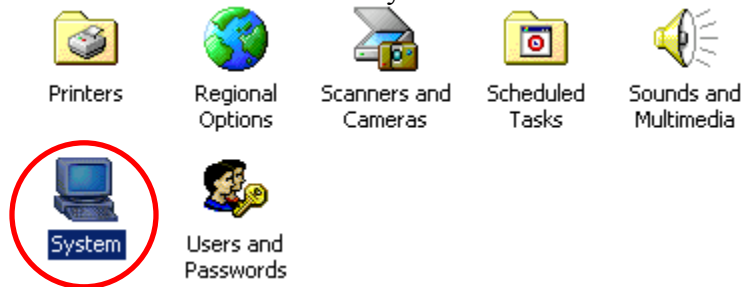


13. Windows will begin copying files from the Asanté CD. When complete click **Finish**.

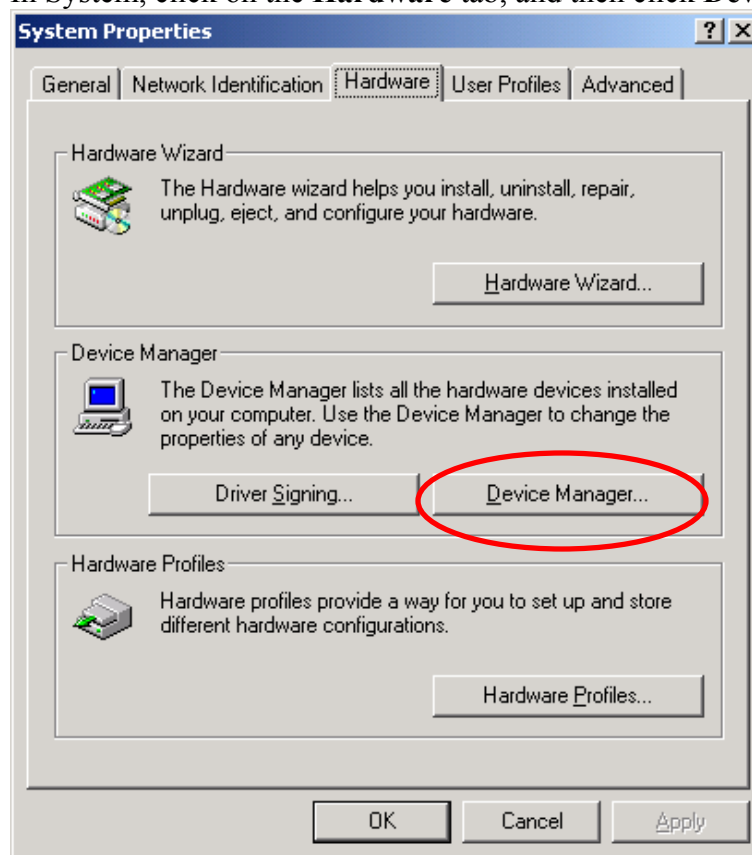


Checking the Installation:

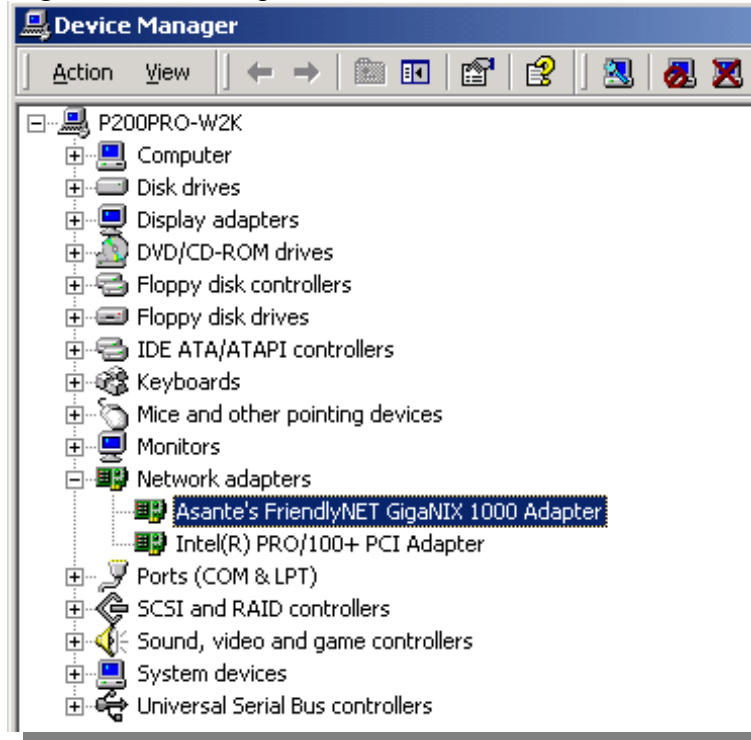
1. To verify that the Asanté GigaNIX 1032TCP card is installed properly go to Windows Device Manager. To get to Windows Device Manager go to Control Panels and select System.



2. In System, click on the **Hardware** tab, and then click **Device Manger**.



3. Click the “+” next to Network Adapters. The Asanté FriendlyNET GigaNIX 1000 Adapter should appear in the list. Double click the Asanté FriendlyNET GigaNIX 1000 Adapter.



4. In the General tab, Device status will appear. It will show, “This device is working properly”, if the Asanté FriendlyNET GigaNIX 1000 Adapter is properly installed. Click **OK** to close.

