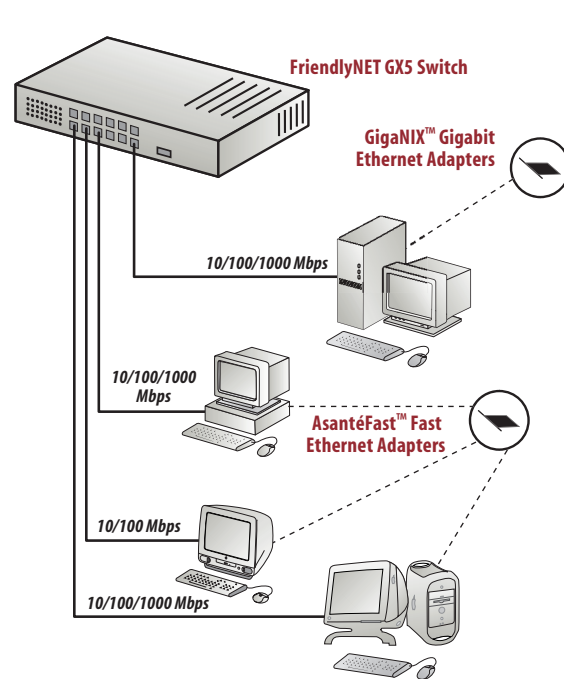




### Connecting to Network Devices

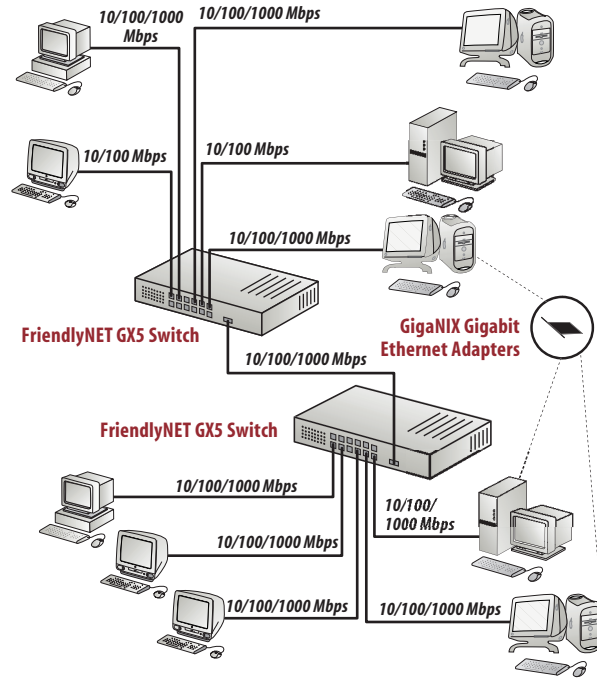
If you are connecting several workstations and a server, you can build the network using the GX5 switch as shown below.



A Simple Network Topology

### Connecting to a Switch or a Hub

When making switch-to-switch connections, connect any port of the GX5 switch with a Gigabit cable to a Gigabit port on the other switch.



Multiple Switch Network

Note: For 1000BaseT, 100BaseTX, and 10BaseT networks, the maximum cable length is 100 meters.

### Product Specifications

**Standards Supported:** IEEE802.3 CSMA/CD; IEEE 802.3 10BASE-T; IEEE 802.3u 100BASE-TX; IEEE802.3z/ab 1000Base-T; IEEE 802.3x Flow-Control; ANSI/IEEE 802.3 NWay Auto-negotiation

**Interface:**  
 GX5-400: 4 x 10/100/1000 Mbps Ethernet ports with Auto-Uplink  
 GX5-1300: 12 x 10/100/1000 Mbps Ethernet ports with Auto-Uplink plus 1 x GBIC interface  
 GX5-2400: 24 x 10/100/1000 Mbps Ethernet ports with Auto-Uplink plus 2 x GBIC interface (shared with ports 23&24)

**Memory:**  
 GX5-400: 256 KB  
 GX5-1300/2400: 2 MB

**Filtering Address Table:**  
 GX5-400: 8k entries per device  
 GX5-1300/2400: 32k entries per device

**Diagnostic LEDs:** Power, 10, 100, 1000 Mbps, Link/Activity, Duplex

**Power:**  
 GX5-400: External power; Input: universal 100~240VAC; Output: 5 VDC @ 3 A  
 GX5-1300/2400: Input: Universal; Output: 100 ~ 240 VAC/50-60 Hz

**Physical Dimensions:**  
 GX5-400: 176 x 102 x 31 mm (W x D x H)  
 6.92 x 4.02 x 1.22 inch  
 GX5-1300/2400: 432 x 250 x 44 mm (W x D x H)  
 17 x 9.8 x 1.7 inch

### Environmental Specifications

**Operating Temperature:** 0° to 40° C  
 0° to 104° F

**Storage Temperature:** -10° to 70° C  
 14° to 158° F

**Operating Humidity:** 10% to 90% RH

**Storage Humidity:** 5% to 95% RH

**Emission:** FCC Class A  
 CE mark Class A  
 VCCI-A

### System Requirements

Compatible with Apple Mac OS, Linux, Microsoft Windows 95/98/Me/XP and Windows NT/2000 Professional/Server. Requires a 10/100 Mbps Fast Ethernet or 10/100/1000 Gigabit Ethernet port for each workstation, server or printer.

### Warranty

Two years of free telephone support (7AM to 6PM MST), 24-hour support via web and FTP, with two-year product warranty.

### Need more help?

Consult the Asanté website ([www.asante.com](http://www.asante.com)) for additional troubleshooting tips and frequently asked questions (FAQ). You may also contact Asanté Technical Support during standard business hours (7am to 6pm MST, Monday-Friday).

**Email:** support@asante.com  
**Phone:** 800-622-7464 or 801-566-8991  
**FAX:** 801-566-3787

### FCC Compliance Statement

This hardware device complies with Part 15 of the FCC Rules. Operation is subject to the following two conditions:

1. This device may not cause harmful interference, and
2. This device must accept any interference received, including interference that may cause undesired operation. This equipment has been tested and found to comply with the limits for a Class A computing device in accordance with the specifications in Subpart B of Part 15 of FCC rules, which are designed to provide reasonable protection against such interference in a residential installation. However, there is no guarantee that interference will not occur in a particular installation.

If you suspect this equipment is causing interference, turn your unit on and off while your radio or TV is showing interference. If the interference disappears when you turn the unit off and reappears when you turn the unit on, something in the unit is causing interference. You can try to correct the interference by one or more of the following measures:

1. Reorient or relocate the receiving antenna;
2. Increase the separation between the equipment and the receiver;
3. Connect the equipment to an outlet on a circuit different from that to which the receiver is connected;
4. Consult the place of purchase or an experienced radio/television technician for additional suggestions.

Any changes or modifications not expressly approved by the party responsible for compliance could void the user's authority to operate the equipment.

### Safety Advisory

1. This product should be operated from the type of power source indicated on the marking label. If you are not sure of the type of power available, consult your dealer or local power company.
2. Do not allow anything to rest on the power cord. Do not locate this product where persons will walk on the cord.
3. Never push objects of any kind into this product through cabinet slots as they may touch dangerous voltage points or short out parts that could result in a risk of fire or electric shock. Never spill liquid of any kind on the product.
4. Do not attempt to service this product yourself, as opening or removing covers may expose you to dangerous voltage points or other risks. Refer all servicing to servicing to service personnel.

### Asanté Product Registration Card

Name \_\_\_\_\_

Title \_\_\_\_\_

Company \_\_\_\_\_

Address 1 \_\_\_\_\_

Address 2 \_\_\_\_\_

City \_\_\_\_\_

State \_\_\_\_\_

Zip/Postal \_\_\_\_\_

Country \_\_\_\_\_

Phone \_\_\_\_\_

Fax \_\_\_\_\_

Email \_\_\_\_\_

Date of Purchase \_\_\_\_\_

Asanté Part Number \_\_\_\_\_

Product Serial Number \_\_\_\_\_

To register your Asanté product online, please visit:  
<http://www.asante.com/support/registration.html>