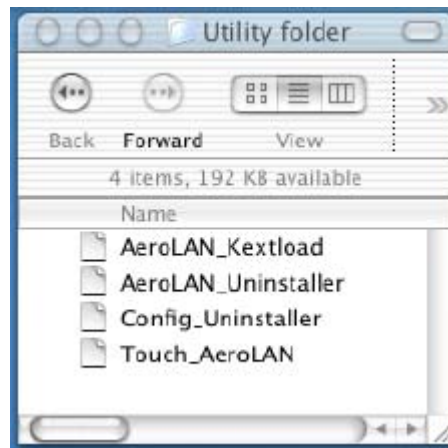


AeroLAN WEP encryption Troubleshooting procedure for PCCard : AL 1011 , AL1211 or PCI : AL 3011

A - I can't make AeroLAN adapter to connect to my WEP encryption enabled Wireless Network :

Here are the steps you need to do :

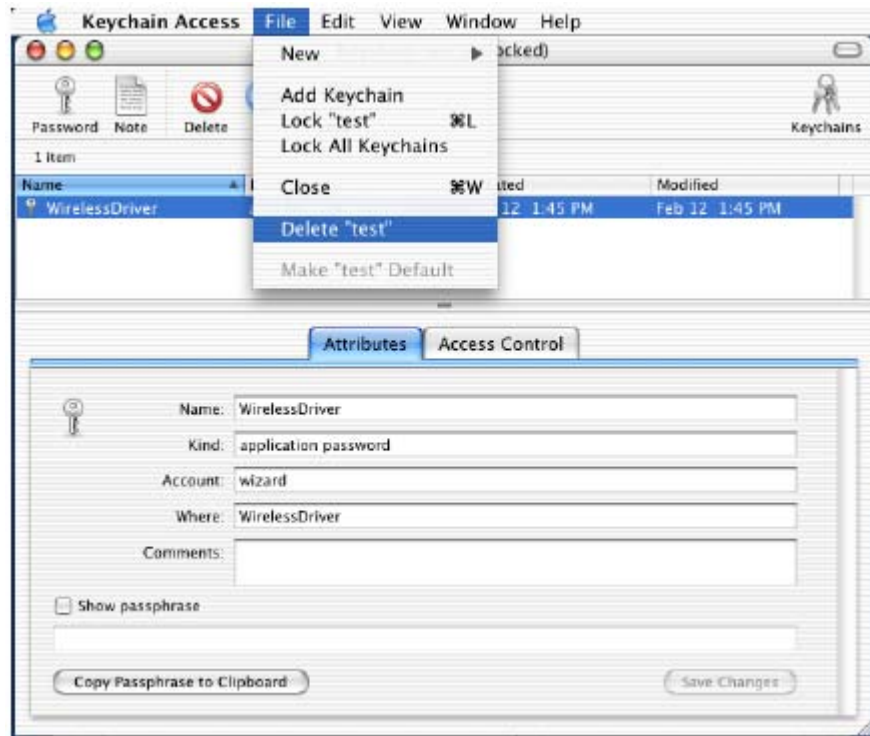
- 1 – Run **Config_Uninstaller** to remove the Config file, that keep the current WEP encryption.



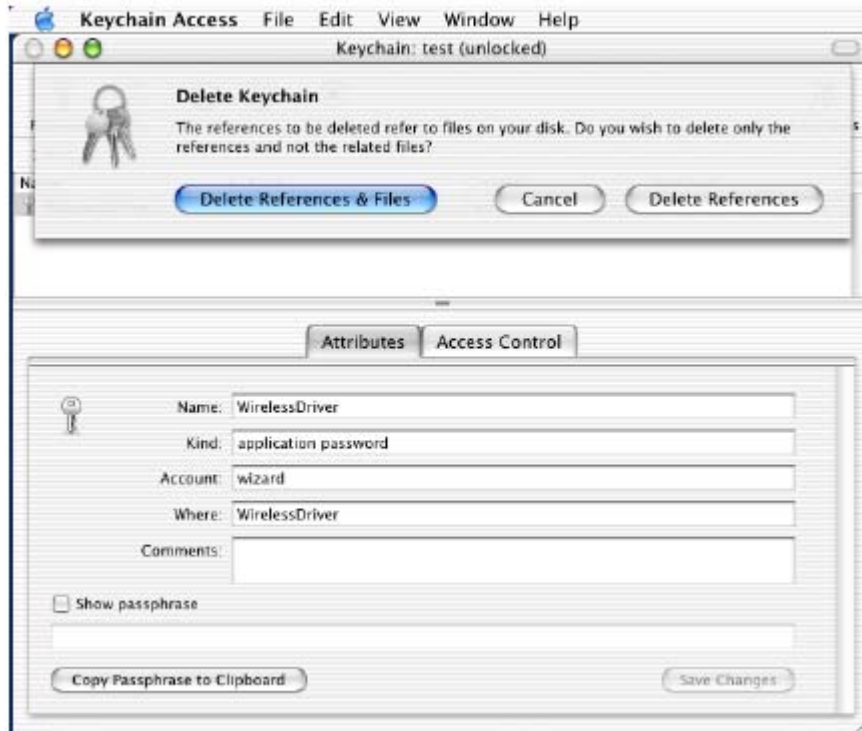
- 2 – Run 'Keychain Access' from Application:Utilities :



to delete the **Keychain file** .



Click '**Delete References & Files**'.



- 3 – **Restart** the system , logging in and run ‘**AeroLAN Wireless**’ from the System Preferences.



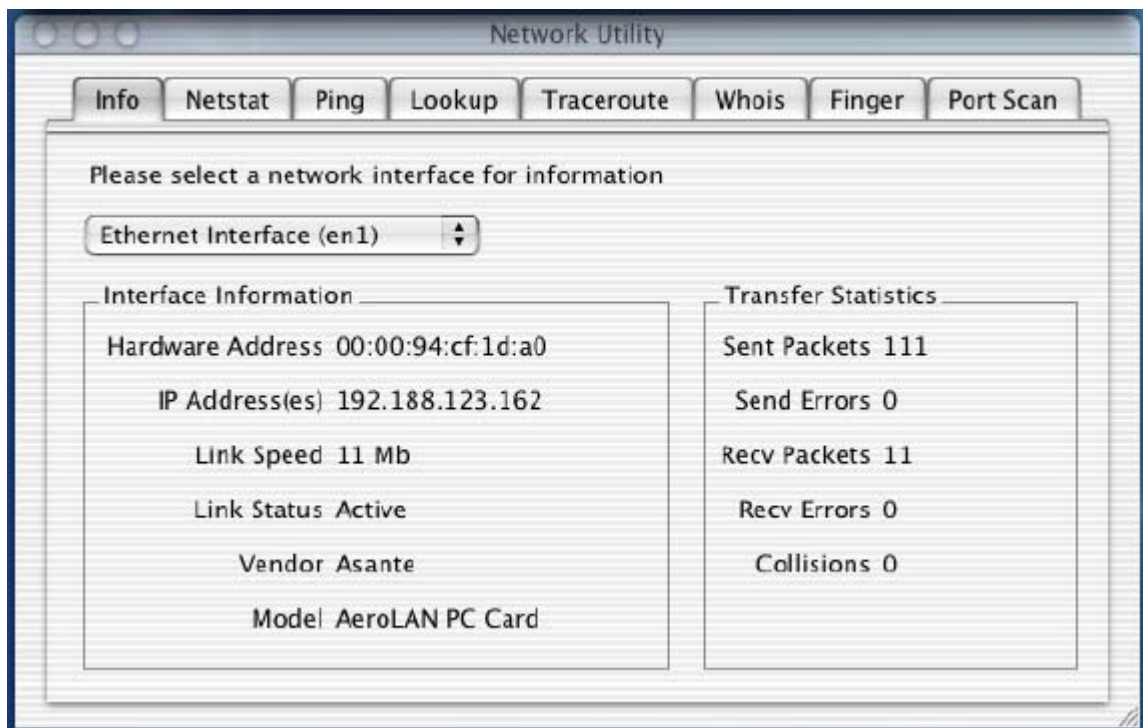
- 4 – Enter the specific network name (SSID) that you want to connect. Check WEP Enabled box then select **64** or **128** bit password (Example: test) or Hex number (example: 54971719...) then click Apply.



Click Apply to convert Apple Airport Password to Hex equivalent number :



5 – Run Network Utility from Application:Utilities folder to check the status.



6 – Run TCP application (Ex: Internet Explorer) to check your network.

B – How to setup the WEP encryption in my Wireless router to support Apple Airport password ?

1 – Run ‘AeroLAN Wireless’ from the System Preferences.



2 – Check WEP Enabled box then choose 64 or 128 bit password (Example: test) or Hex number (example: 54971719...), don't care about SSID.



3 – Click Apply to convert Apple Airport Password to Hex equivalent number :



4 – Enter the Hex equivalent number into your wireless router WEP encryption setup window.

The screenshot shows the configuration interface for an Asanté FriendlyNET™ FR3000 Series Wireless Router. The page has a navigation bar with buttons for Setup, Status, Security, Advanced, and Wireless. The 'Security' section is active, showing 'Wireless Setup Options' and 'WEP Security Settings'. Under 'Wireless Setup Options', the Network ID (SSID) is set to 'Wizard' and the Channel is set to '7'. In the 'WEP Security Settings' section, the 'Enable IEEE 128-bit Shared Key Security' option is selected. The 'WEP Key 1' field contains the hexadecimal value '5497171965d16412bda9408'. At the bottom of the page, there are buttons for 'Apply New WEP Security Options', 'Undo', 'Help', and 'Log Out'.

The screenshot shows an 'Internet Explorer Script Confirmation' dialog box. It features a warning icon (an exclamation mark inside a triangle) and the text 'Restart Router?'. At the bottom of the dialog, there are two buttons: 'Cancel' and 'OK'.

5 – Now you can connect to your wireless router with your selected password.

C – How to connect to your specific network with WEP encryption enabled right after login ?

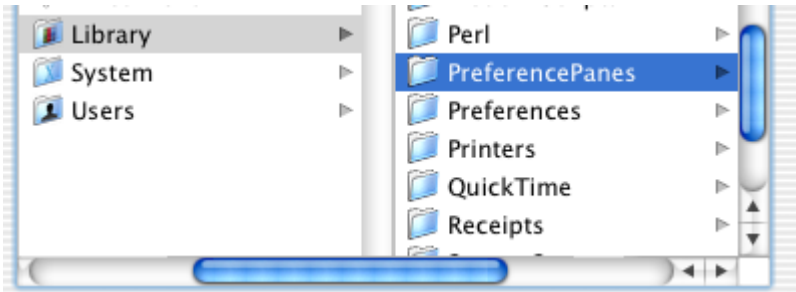
1 – Select ‘Login Items’ from System Preferences window :



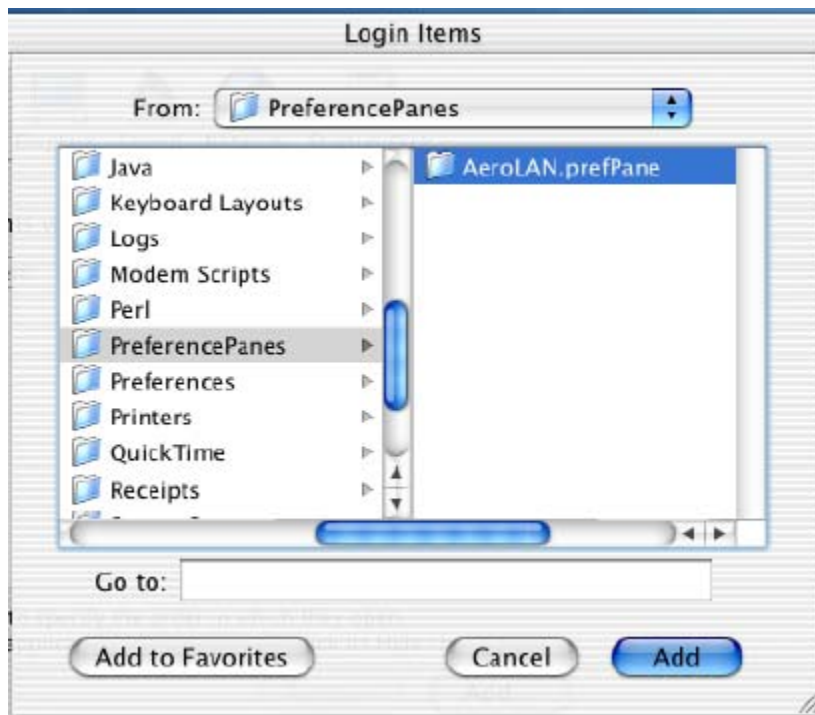
2 – Click ‘Add’ :



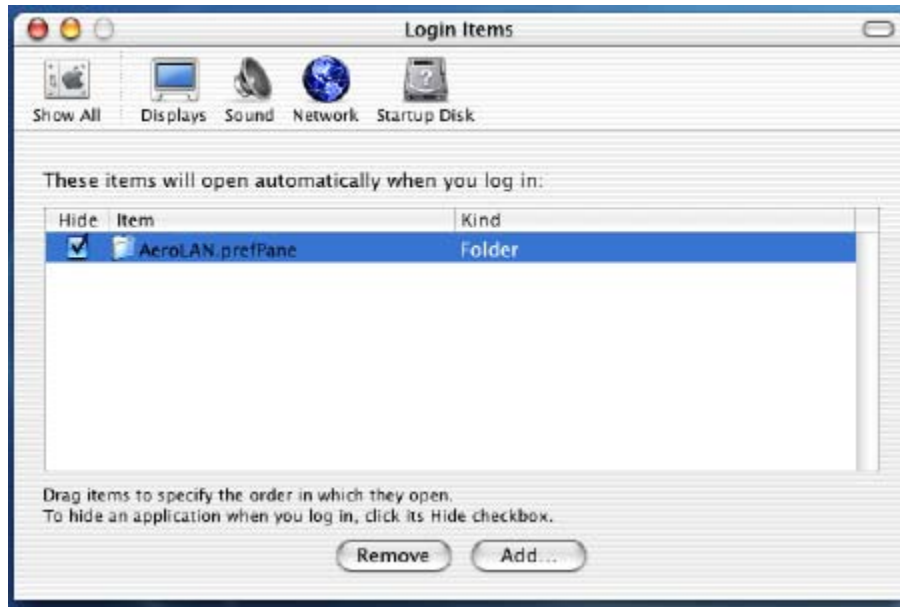
3 – Select Library , click PreferencePanels :



4 – Select **AeroLAN.prefPane**, then click ‘Add’:



5 – Check the **Hide** box if you want an ‘AeroLAN Wireless’ window not to appear after login.



Now , if you reboot the system and login again, AeroLAN Wireless will launch automatically and connect to your selected network with WEP encryption enabled.