

## IntraCore<sup>®</sup> IC3624PWR



24-port 10/100 PoE L2+ Switch with Dual Gig

### Product Overview and General Information

**Q: What is the Asante IntraCore IC3624PWR?**

**A:** The Asante IntraCore IC3624PWR is an enterprise-class, 24-port 10/100 (with 2 combo Gigabit Ethernet ports), 1-rack-unit (RU), managed, PoE (IEEE 802.3af) L2+ switch. The product comes in a fixed configuration and supports a Layer 2+ feature set that is ideally suited as enterprise edge or as a small enterprise/business network infrastructure solution. The switch is specifically designed to provide a complete solution for the deployment of new enterprise-class applications such as IP telephones (VoIP), Wireless LAN Access Points (WLAN APs), security cameras/surveillance systems, remote building management systems and a host of other PoE applications that are making their way onto the market. With its unique Layer 2+ feature set, the product provides advanced QoS capabilities, including: 802.1p prioritization, DiffServ, and IP TOS. Additionally, the switch can be managed in a multitude of ways, including: web browser, Cisco-like Command Line Interface (CLI), SNMP, Telnet, and Console.

**Q: What are the benefits of using a PoE switch?**

**A:** By deploying a PoE switch, users can gain a reduced Total Cost of Ownership (TCO) when combined with VoIP and other 802.3af compliant products (e.g., security cameras). Savings can be garnered through the reduced costs associated with additional power cabling/outlets, additional video cable, and an overall simplified mechanism for deploying voice/video/data solutions.

**Q: Is the Asante IntraCore IC3624PWR PoE standards compliant?**

**A:** Yes. The switch is fully compliant with the IEEE 802.3af standard for PoE.

**Q: How many devices can the Asante IntraCore IC3624PWR support?**

**A:** The switch comes with a 225 watt power supply and can deliver 170 watts to the 24 ports of the switch - with a maximum of 15.4 watts to each port. Given that the typical VoIP phone operates in the 4-7 watt range, the product can support a fully populated configuration (24 x 7 = 168 watts). In fact, Asante uses the IntraCore IC3624PWR in its internal network with ShoreTel's VoIP solution - in a fully populated configuration.

**Q: On what pairs of wires does the Asante IntraCore IC3624PWR provide PoE power?**

**A:** The switch provides PoE power on the Spare Pairs (4&5 and 7&8).

**Q: Is the Asante IntraCore IC3624PWR compatible with Cisco VoIP phones?**

**A:** Yes - the switch is compatible with many types of Cisco VoIP phones. The switch can usually operate in a "plug-and-play" mode with Cisco's newer 802.3af compliant phones (e.g., 7970 and newer models). The switch can usually work in a "plug-and-play" mode with certain Cisco's pre-standard phones (e.g., 7905G and 7912G). For Cisco's oldest pre-standard VoIP phones (e.g., 7910, 7940G, and 7960G), you do need to use a PowerDSine splitter "dongle" (PowerDSine model PD-PS401/Cisco) connected to the back of the phone in order for Asante's industry-standard 802.3af switch to power these pre-standard IP Phones.

**Q: What PoE devices have been tested and verified to work with the Asante IntraCore IC3624PWR?**

**A:** Typically, any device that has been designed to the specifications of IEEE 802.3af standard should work with this switch. In addition, the Asante IC3624PWR can also be used with almost any pre-standard POE end-station using an inexpensive splitter. For a detailed list of which POE end-stations are compatible and any required splitter for pre-standard end-stations, please see <http://www.powerdsine.com/Products/SelectionGuide.asp>.

**Q: What PoE devices DO NOT work with the Asante IntraCore IC3624PWR?**

**A:** Not every device is IEEE 802.3af compliant. Some early versions of VoIP phones are not compliant with the standard and may/may not operate correctly with the Asante IntraCore IC3624PWR. The IEEE 802.3af standard makes it very clear that Powered Devices shall accept power over the Data Pairs (1&2 and 3&6) and the Non-Data Pairs (4&5 and 7&8). Additionally, the standard states that a compliant device shall also be insensitive to power polarity. Products that do not support the compliance requirements of the IEEE 802.3af may not work with the Asante IntraCore IC3624PWR.

**Q: What type of fiber Gigabit uplinks does the Asante IntraCore IC3624PWR support?**

**A:** The Asante IntraCore IC3624PWR currently supports three Small Form-Factor Pluggable (SFP) Gigabit Ethernet modules:

- SFP M1000SX, 1000BaseSX SFP mini GBIC module, duplex LC connector for connections up to 550 meters in length
- SFP M1000LX, 1000BaseLX SFP mini GBIC module, duplex LC connector for connections up to 10 kilometers in length
- SFP M1000LZ, 1000BaseLZ SFP mini GBIC module, duplex LC connector for connections up to 80 kilometers in length

**Q: Can I use the Asante IntraCore IC3624PWR to provide uninterruptible power (UPS) service to my VoIP phones?**

**A:** Yes, by installing the switch on a UPS, you can provide uninterruptible power to your VoIP phones (or any other PoE device as well).

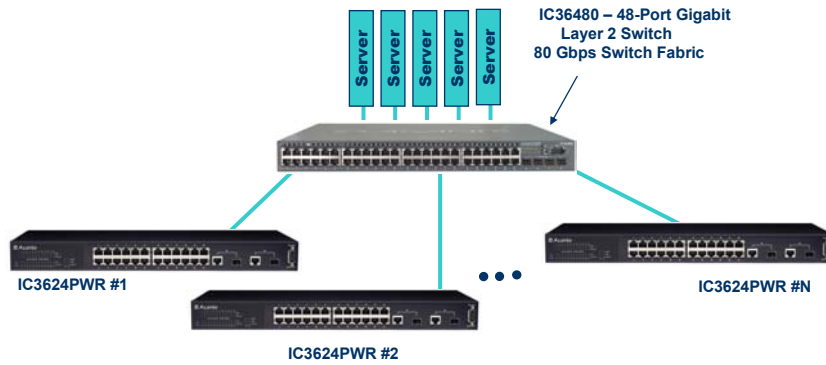
**Q: How can I use the Asante IntraCore IC3624PWR to provide PoE to 48 devices?**

**A:** You can interconnect two Asante switches using the built-in 1000T up links (with CAT 5 cable) to create a virtual 48-port PoE switch.

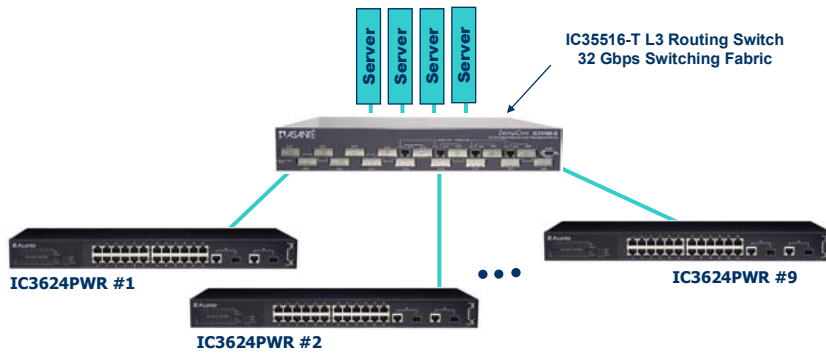
**Q: I need to deploy a large installation (hundreds) of 10/100 PoE ports for my company. Does Asante have a solution to meet my needs?**

**A:** Yes - Asante has a variety of networking solutions to meet your needs – including a full family of Layer 2 and Layer 3 Gigabit switches and switching routers. See the following solution examples for details.

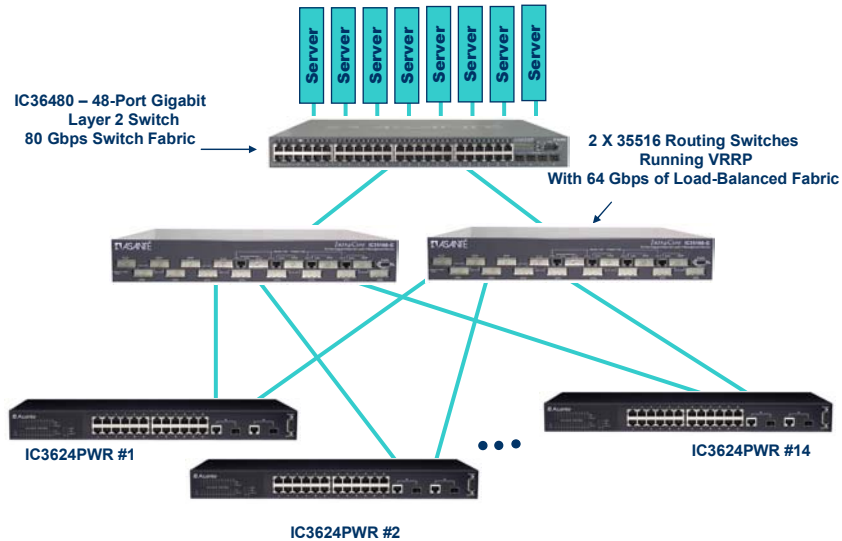
### Sample PoE Installation: 1 Subnet, 200 Users



### Sample PoE Installation: Multiple Subnets, 200 Users



## Sample PoE Installation: Multiple Subnets, 300+ Users, Redundant Core



### L2+ Switching and Management

**Q: What is the switching performance of the Asante IntraCore IC3624PWR?**

**A:** The device is designed with a non-blocking switch fabric of 8.8 Gbps.

**Q: What unique features does the Asante IntraCore IC3624PWR support for VoIP and other time-sensitive applications?**

**A:** The switch supports several unique L2+ features that are specifically designed into the product to support VoIP and other time-sensitive applications, including:

- IEEE 802.1p
- DiffServ
- IP TOS

**Q: Does the Asante IntraCore IC3624PWR support other unique L2+ features?**

**A:** Yes – it supports a multitude of advanced features, including:

- Virtual LANs: IEEE 802.1Q (255 VLANs)

- Spanning Tree: IEEE 802.1d (STP), IEEE 802.1s (multiple), and IEEE 802.1w (rapid)
- Flow Control: IEEE 802.3x
- Link Aggregation: IEEE 802.3ad, LACP with up to 6 trunks
- Authentication: IEEE 802.1x per port access control
- Access Control Lists (ACL) for security access

**Q: What types of network management does the Asante IntraCore IC3624PWR support?**

**A:** The switch supports web browser, Cisco-like CLI, SNMPv1 and 2c, Telnet (multiple sessions), and Console management.

### Service and Warranty

**Q: What is the hardware warranty on the Asante IntraCore IC3624PWR?**

**A:** The switch has a three-year hardware warranty.

**Q: How do I get technical support on the Asante IntraCore IC3624PWR?**

**A:** Asante offers technical support via telephone, the web ([www.asante.com](http://www.asante.com)) or via email ([support@asante.com](mailto:support@asante.com)).

### Product and Contact Information

**Q: Where can I find product, technical, and additional information about the Asante IntraCore IC3624PWR and other Asante networking products?**

**A:** Please go to [www.asante.com](http://www.asante.com). Or you may contact Asante Sales at 800-303-9121 or [sales@asante.com](mailto:sales@asante.com).

**Asante Technologies, Inc.**

2223 Old Oakland Road  
San Jose, CA 95131

Tel: (408) 435 8388  
Fax: (408) 432 7511  
Net: [sales@asante.com](mailto:sales@asante.com)